



Location

Northwest corner of Crismon Road and the US 60

Size

19.9 acres—The western 19.9 acres is proposed for residential.

Zoning Status

Entitlements for medium density residential (+/- 5/acre) underway for the western portion of the subject parcel.

Current Zoning

Business park/PAD C-1 and PEP.

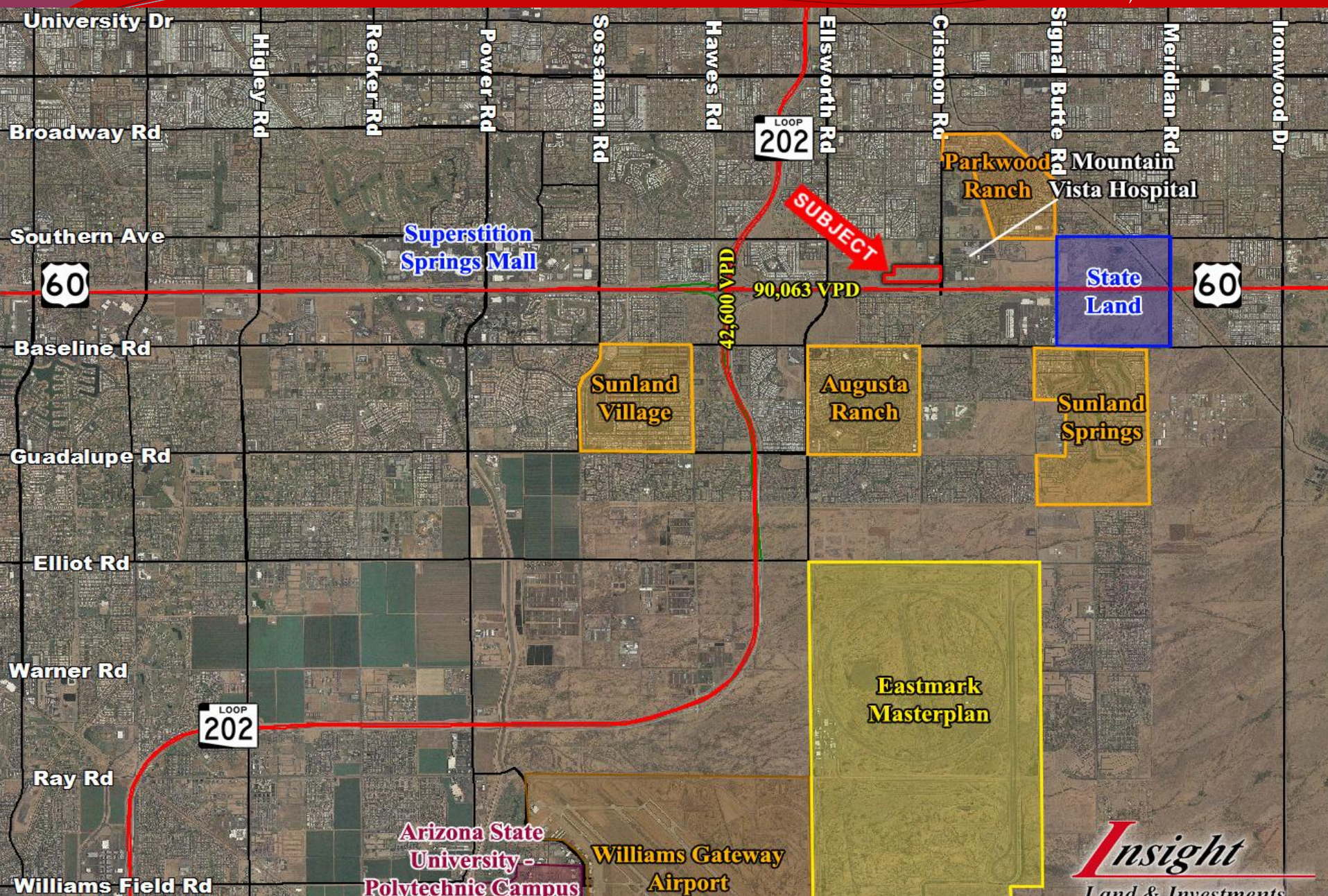
Price

\$125,000 per acre for western 19.9 acres

Comments

- Available subject to zoning and site plan approval
- Newer area of Mesa all land uses within one half mile were built after 1998
- The 3 neighborhood schools-Noah Webster Basic School rated A, Fremont Middle School rated A and Skyline High School rated B by the Az. Department of education
- Across Crismon from Mountain Vista Hospital fully operational in 2011 employing 800 including doctors, medical technicians and staff
- Signalized intersection at Hampton Avenue which forms the northern boundary

AVAILABLE SUBJECT TO ZONING | MESA, ARIZONA





Superstition Country

Parkwood Ranch

Crimson Crossing

E Flossmoor Ave

E Southern Ave

Hampton Ave

96th St.

Southern Ave

Crismon Rd.

Hampton

304'

60

US 60

