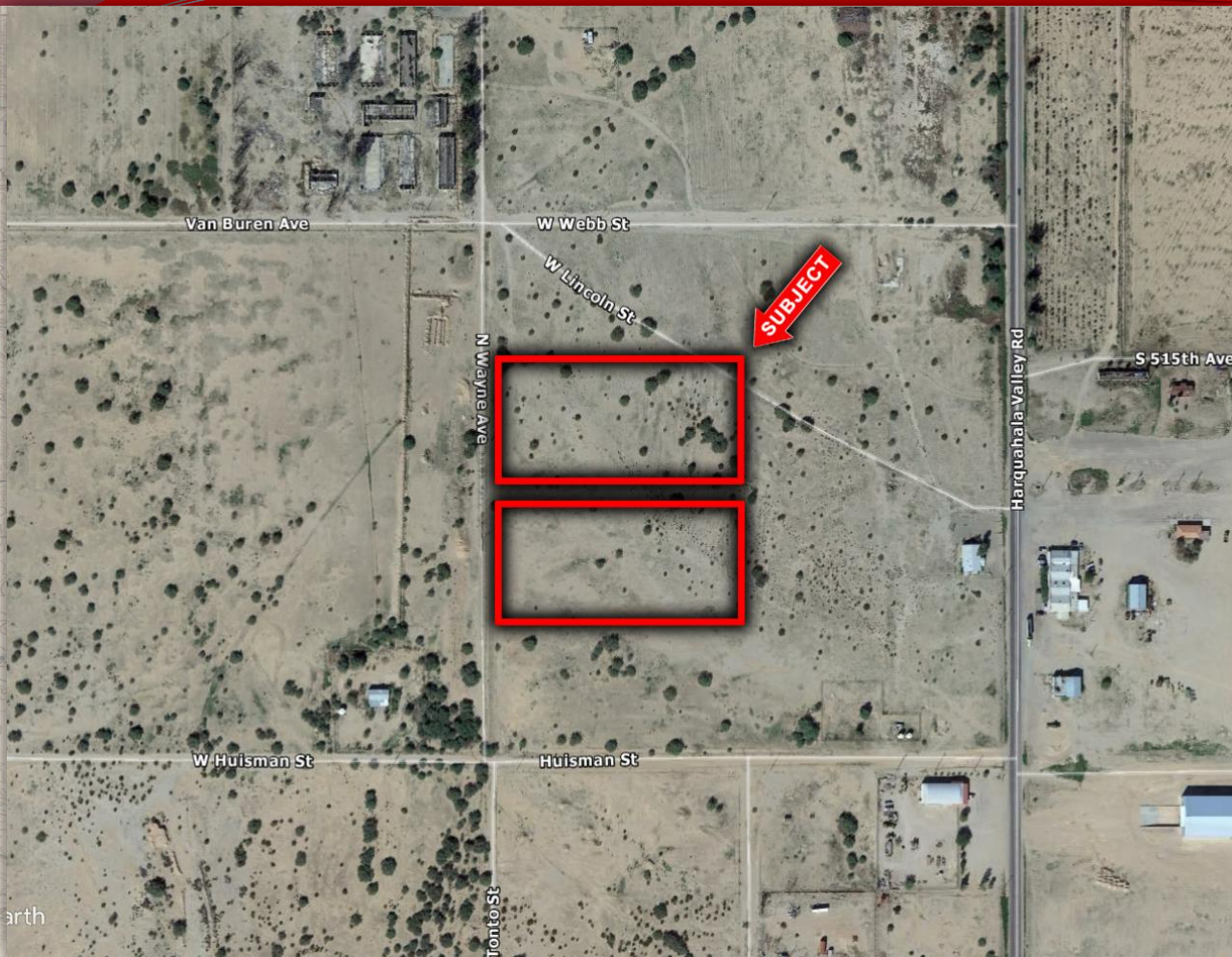


±8.34 AC, RU-43, Tonopah - AZ



Location: W of SWC of Webb St & Harquahala Valley Rd in Harquahala Valley, AZ.

APN(s): 506-32-015,016

Zoning: RU-43

Size: ± 8.34 AC (363,290 SF)

Price: \$40,000

Terms: Submit

Comments:

- Two +/- 4.17 acre lots located within the Huisman-Webb Tract Subdivision
- Located walking distance from pavement
- Excellent lot split opportunity with minimum 1-acre zoning

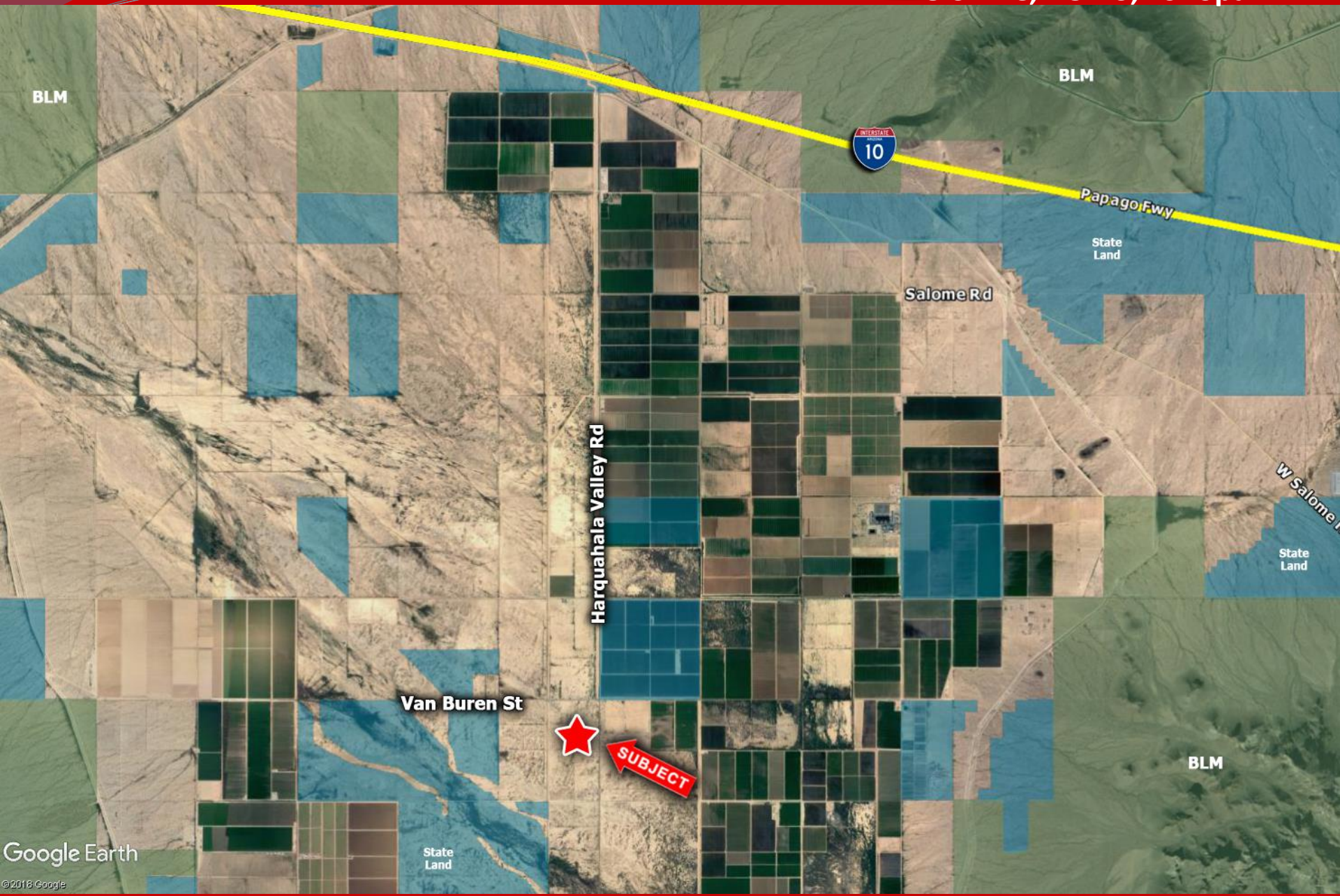
Tonopah, Arizona

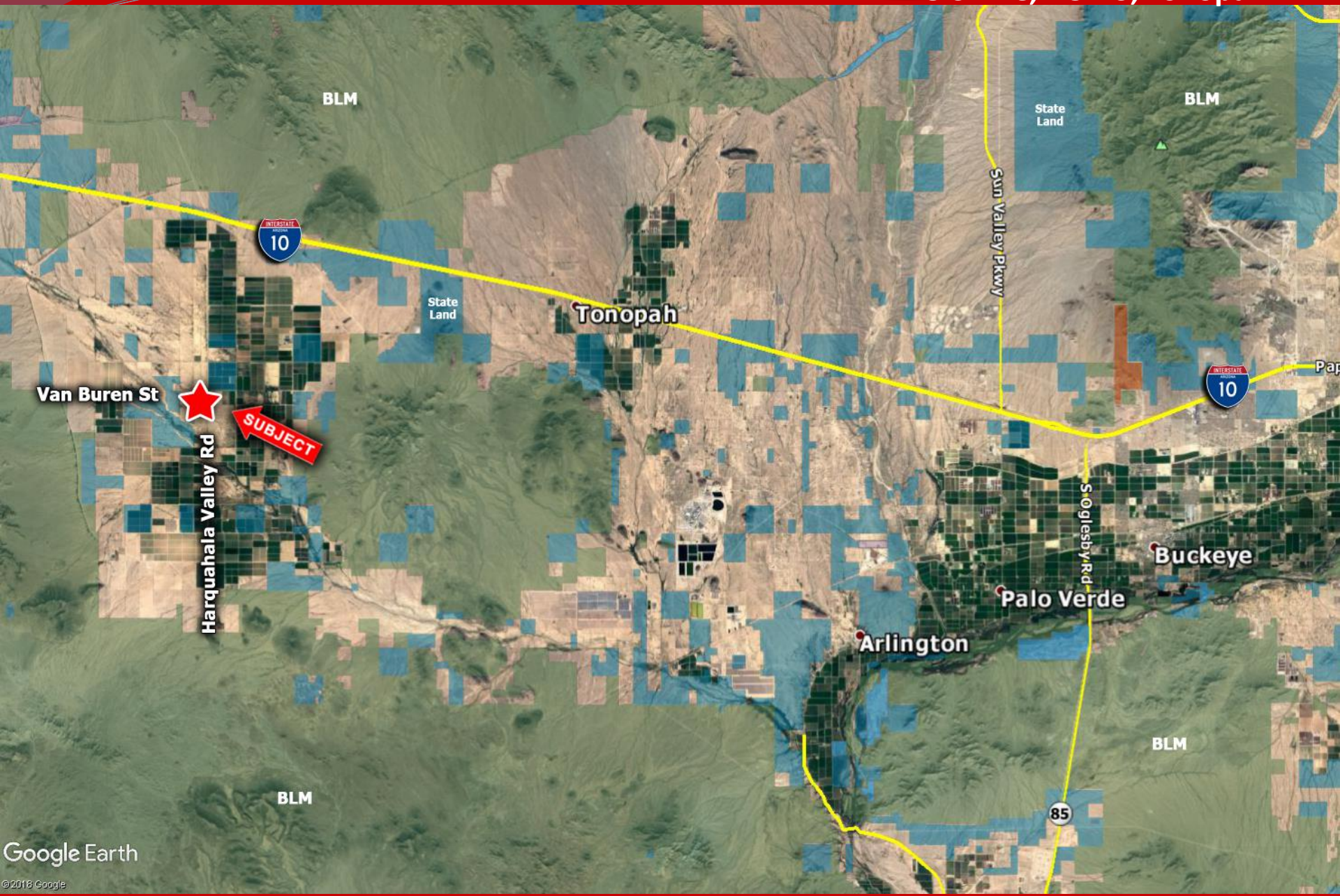
Insight Land & Investments
7400 E McDonald Dr, Ste 121
Scottsdale, Arizona 85250
602.385.1535
www.insightland.com

All information furnished regarding property for sale, rental or financing is from sources deemed reliable, but no warranty or representation is made to the accuracy thereof and same is subject to errors, omissions, change of price, rental or other conditions prior to sale, lease or financing or withdrawal without notice. No liability of any kind is to be imposed on the broker herein.

JOE WERNER
Direct: 602-385-0567
jwerner@insightland.com

SHARON CONTORNO
Cell: (602) 620-6626
scontorno@insightland.com

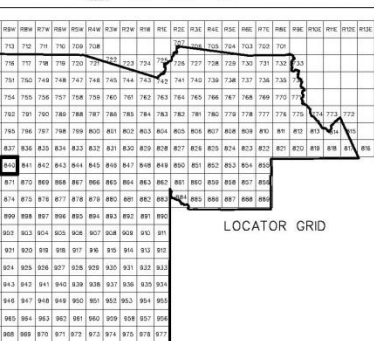




PT. SECTION 10 T01N R09W

MAP ID * 840 - 10 - 01 - 00

PARCEL IDENTIFICATION NUMBER



LOCATOR GRID

SECTION

06	05	04	03	02	01
07	08	09	10	11	12
13	14	15	16	17	18
19	20	21	22	23	24
25	26	27	28	29	30
31	32	33	34	35	36

1/4 SECTION

02	01
03	04

1/4 1/4 SECTION

02	01
03	04

ASSESSOR BOOKS & MAPS WITHIN THIS AREA

BOOK: 506 MAP: 24
BOOK: 506 MAP: 29
BOOK: 506 MAP: 32
BOOK: 506 MAP: 59
BOOK: 506 MAP: 60

SUBDIVISIONS

HUISMAN-WEBB TRACT
MCR 086-20, 1961 SUB
KRUSE-WEBB TRACT UNIT 1
MCR 089-03, 1961 SUB
BAKKOW PLAZA
MCR 097-30, 1961 SUB

SCALE: 1" = 200'



Maricopa County
Assessor's Office

01-15-2009

MARICOPA COUNTY ASSESSOR'S OFFICE
301 W. JEFFERSON ST.
PHOENIX, AZ 85003
www.maricopa.gov/assessor

LEGEND:

- Subdivision Boundary Line
- Subdivision Boundary Corner
- Street Centerline
- Section Corner Marker
- Indicates change in original boundary
- Parcel Boundary Line
- Parcel Split Line
- Parcel Number
- Parcel Boundary Type

