

Location: 431st Ave. 1/4 mile north of Salome Rd.

APN(s): 506-33-526G

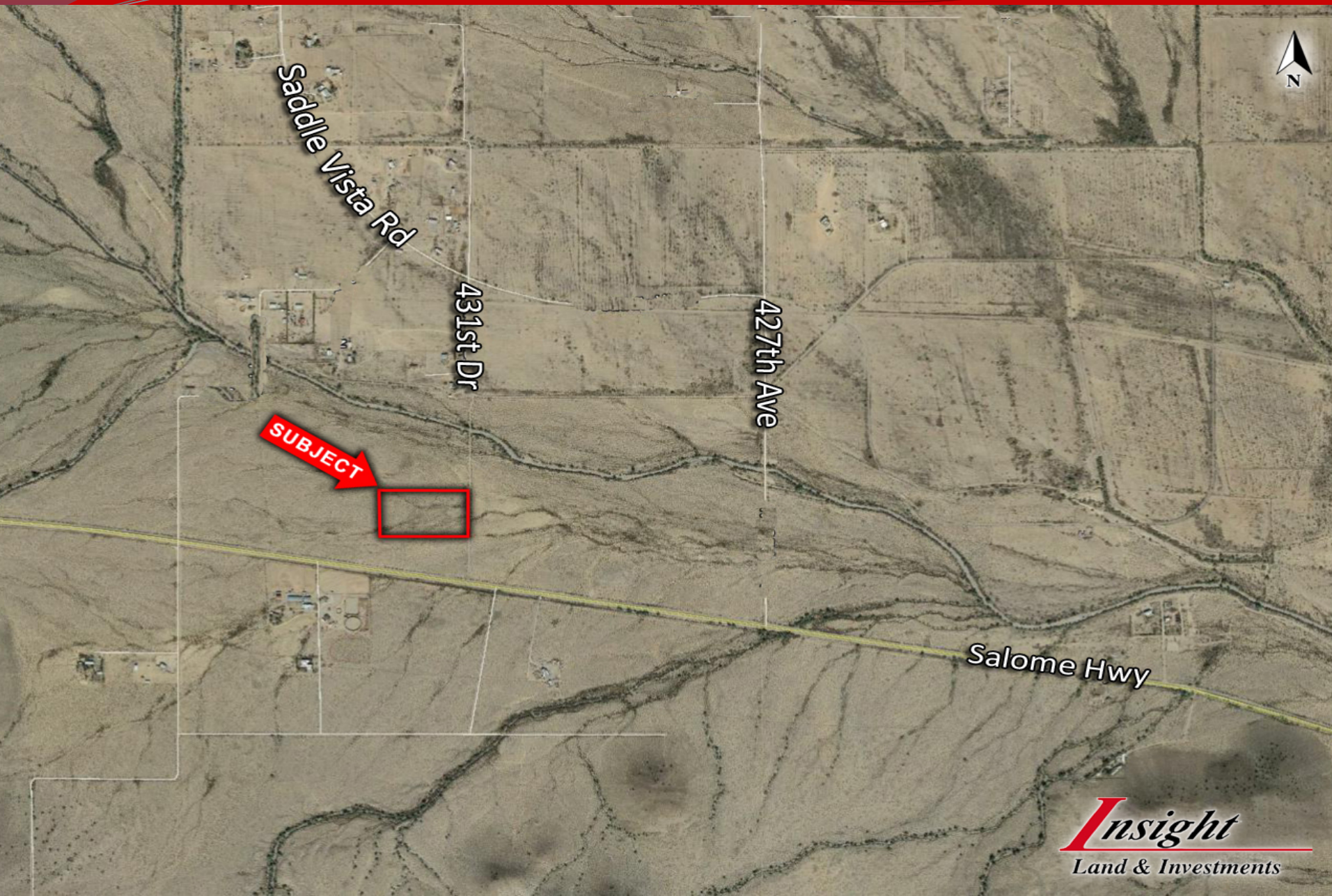
Zoning: R-43

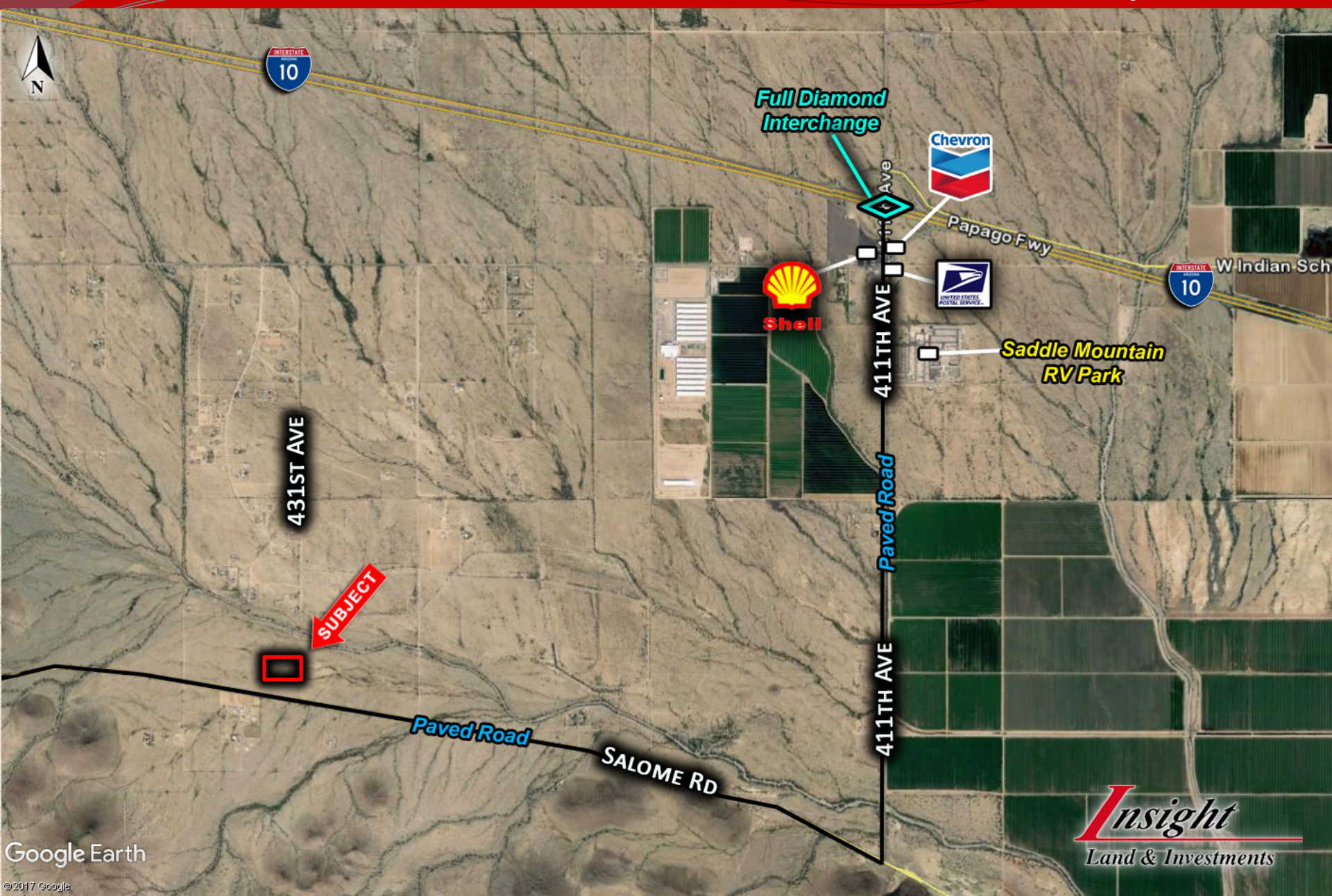
Size: 9 +/- ACRES

Utilities: Electric within approx. 1,200'

Price/Terms: \$108,000
Seller will carry

Comments: Five minutes from I-10, stores, gas stations, food, post office. Gorgeous views of Saddle Mountain. Great horse property with hundreds of acres of BLM land approximately 1 mile south of the property.





506-33-