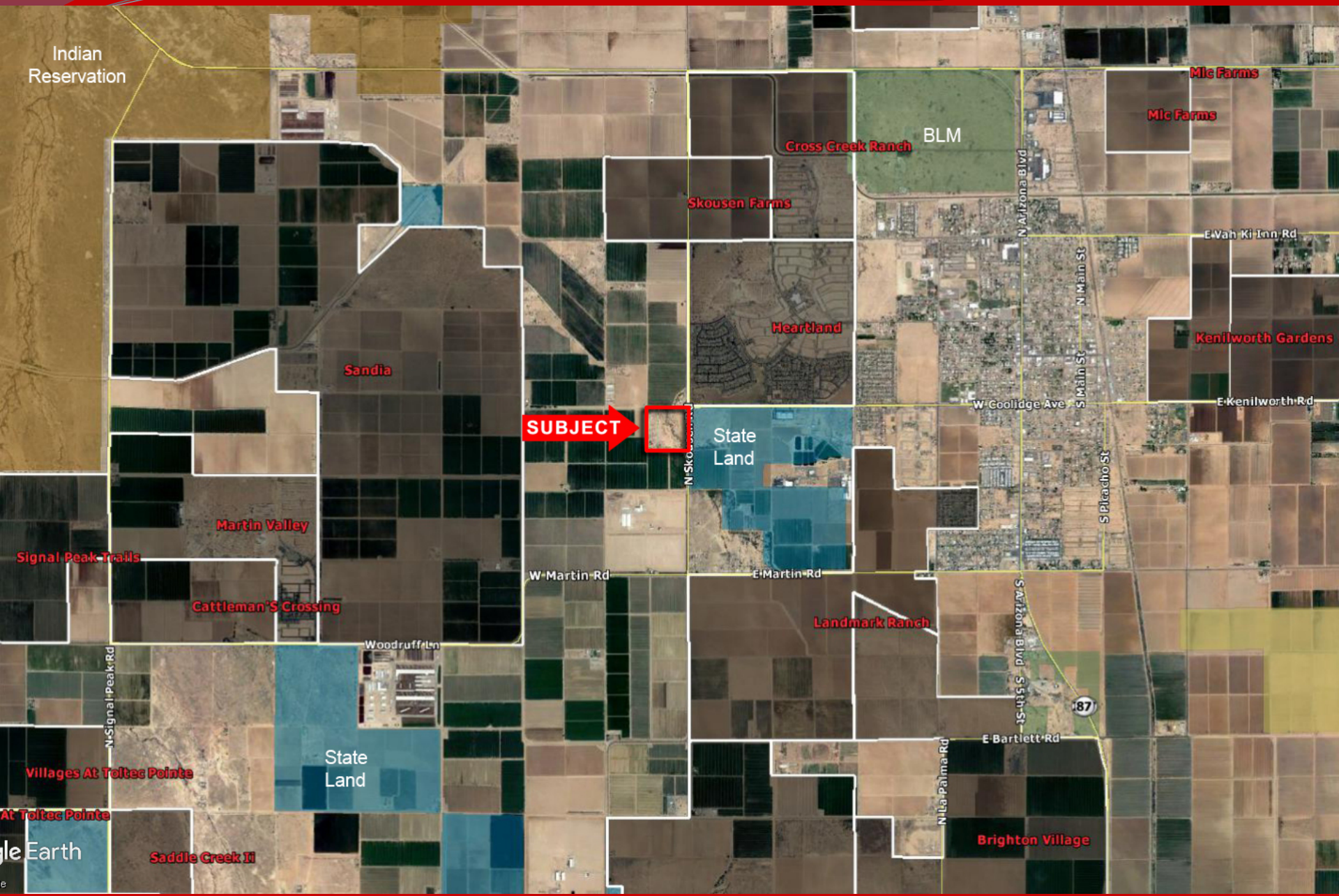
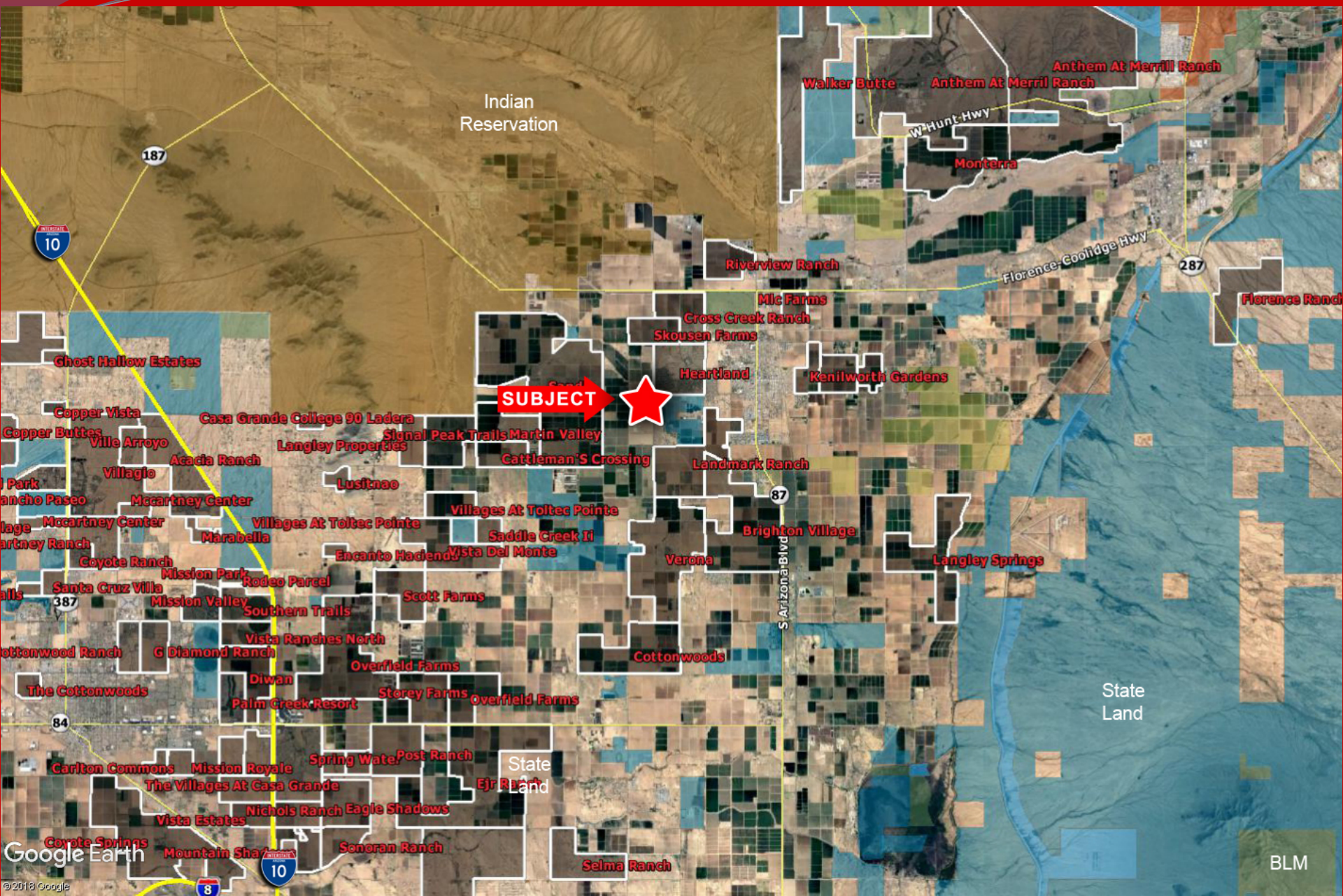


- ❑ **Location:** SWC of Skousen Road & Kenilworth Road, Coolidge, AZ
- ❑ **APN:** 209-28-001
- ❑ **Zoning:** AG (City of Coolidge) Rural Agriculture
- ❑ **Size:** +/- 37.83 Net Acres
- ❑ **General Plan:** Mixed Use
- ❑ **Price:** \$440,000
- ❑ **Taxes:** \$3,069.21 (2017)
- ❑ **Comments:** Property is located adjacent to Heartland MPC. Section line corner in the path of growth. Excellent investment or 1031 exchange.

EXCLUSIVELY LISTED





SEC. 30 TN.5S RG.8E

SEE MAP 209-19
E KENILWORTH RD

209-28

AREA CODE
2103
2114

SPECIAL DISTRICTS
12662
16606

THIS MAP IS FOR TAX PURPOSES ONLY
THIS OFFICE WILL NOT ASSUME LIABILITY FOR
REPRESENTATION, MEASUREMENTS OR ACREAGE.

SEE BOOK 509

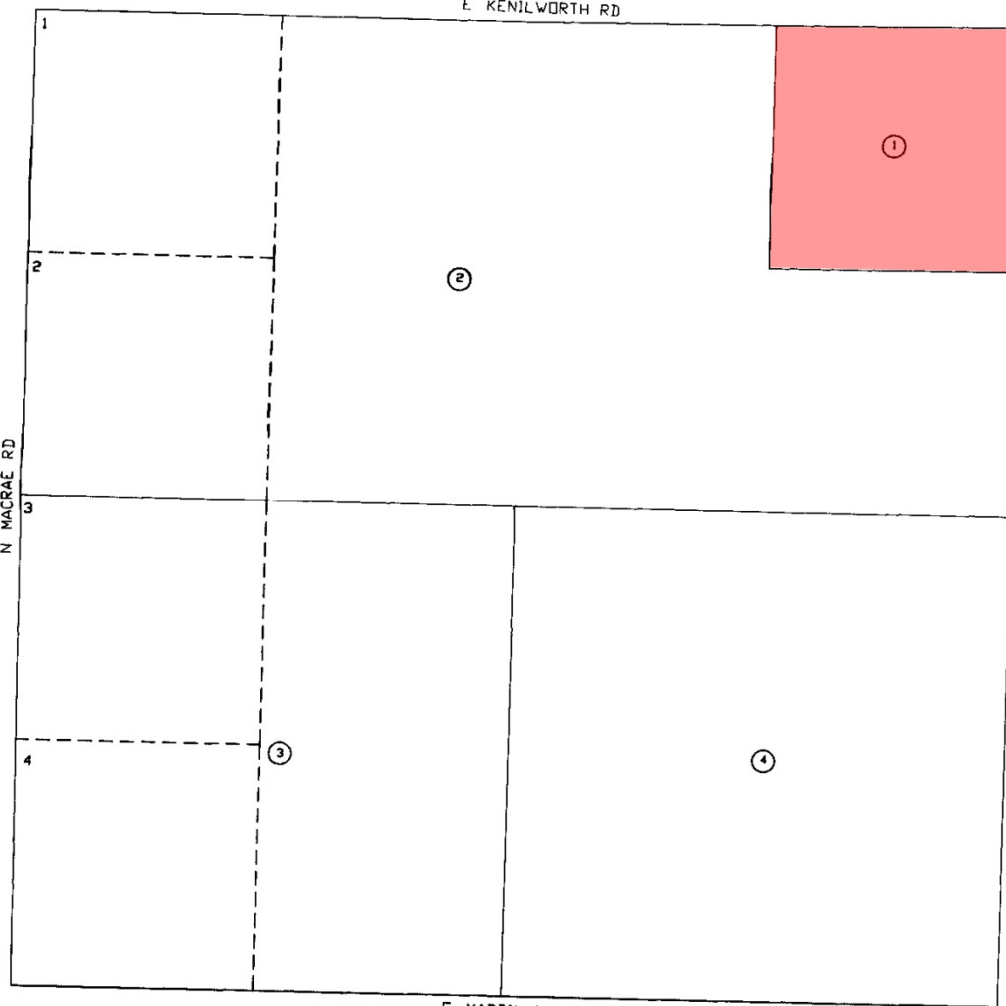
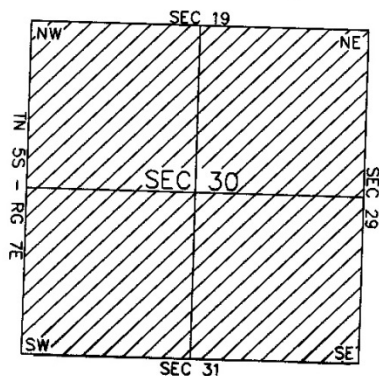
N MACRAE RD

N SKOUSEN RD

SEE MAP 209-25

THE ORIGINAL PLAT OF THIS SUBDIVISION IS
ON FILE WITH THE PINAL COUNTY RECORDERS
OFFICE, FOR COMPLETE INFORMATION OF PLAT
AND CARRY CALL (602) 868-7100.

VICINITY MAP



SEE MAP 209-29



SCALE: 1" = 600'

09-03-2001

PINAL COUNTY ASSESSORS MAP