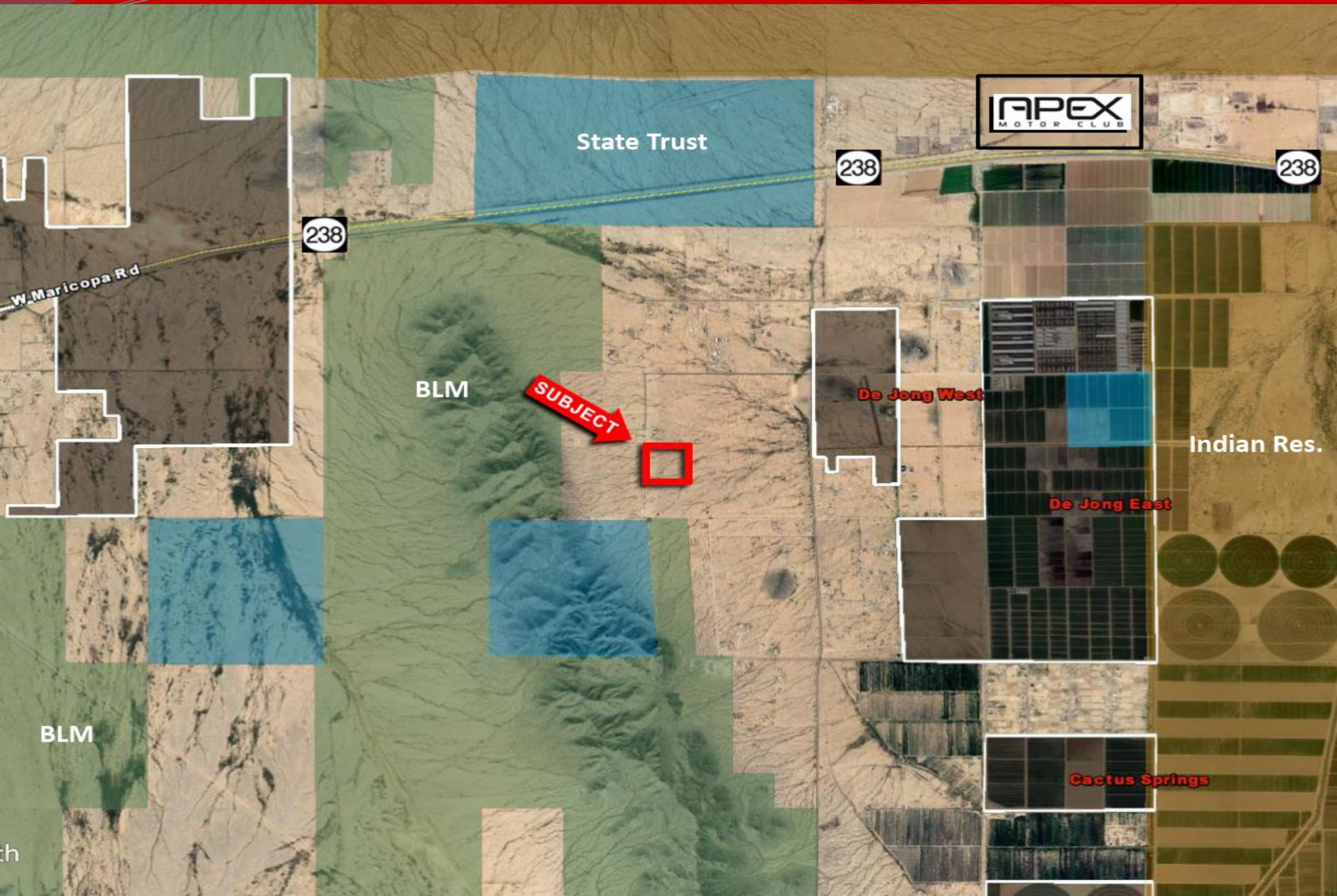
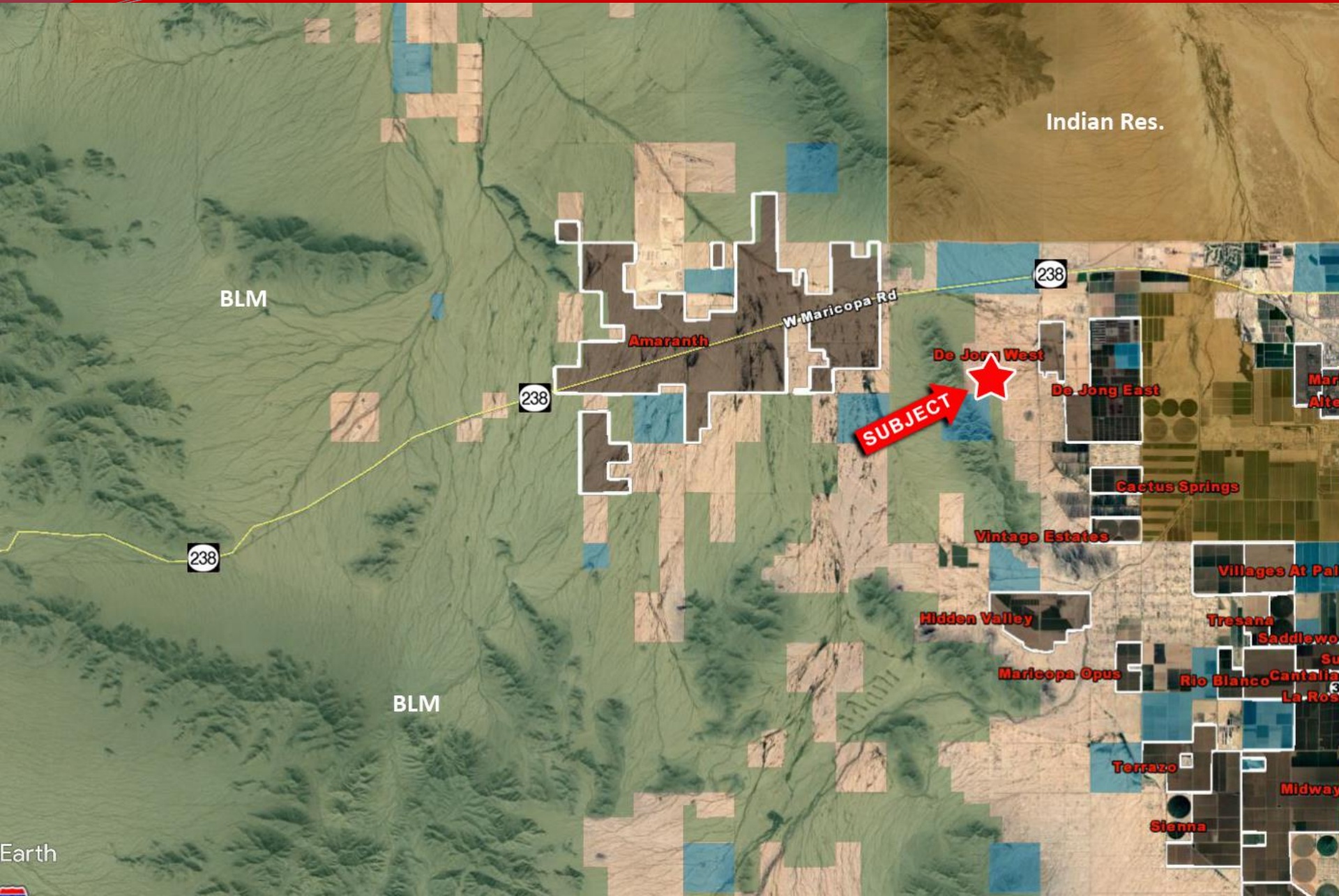


- ❑ **Location:** N of NEC of Bowlin Rd & Sage St, Pinal County, AZ
- ❑ **APN:** 510-04-036
- ❑ **Zoning:** GR– General Rural
(1 unit per 1.25 ac)
- ❑ **Size:** +/- 40 Acres
- ❑ **Price:** \$399,000 or \$9,975/ac
- ❑ **Comments:** Property has excellent views of the adjacent mountains to the west. Excellent investment or 1031 exchange. Seller will consider a terms sale. All or part – 10 to 40 Acres.

EXCLUSIVELY LISTED

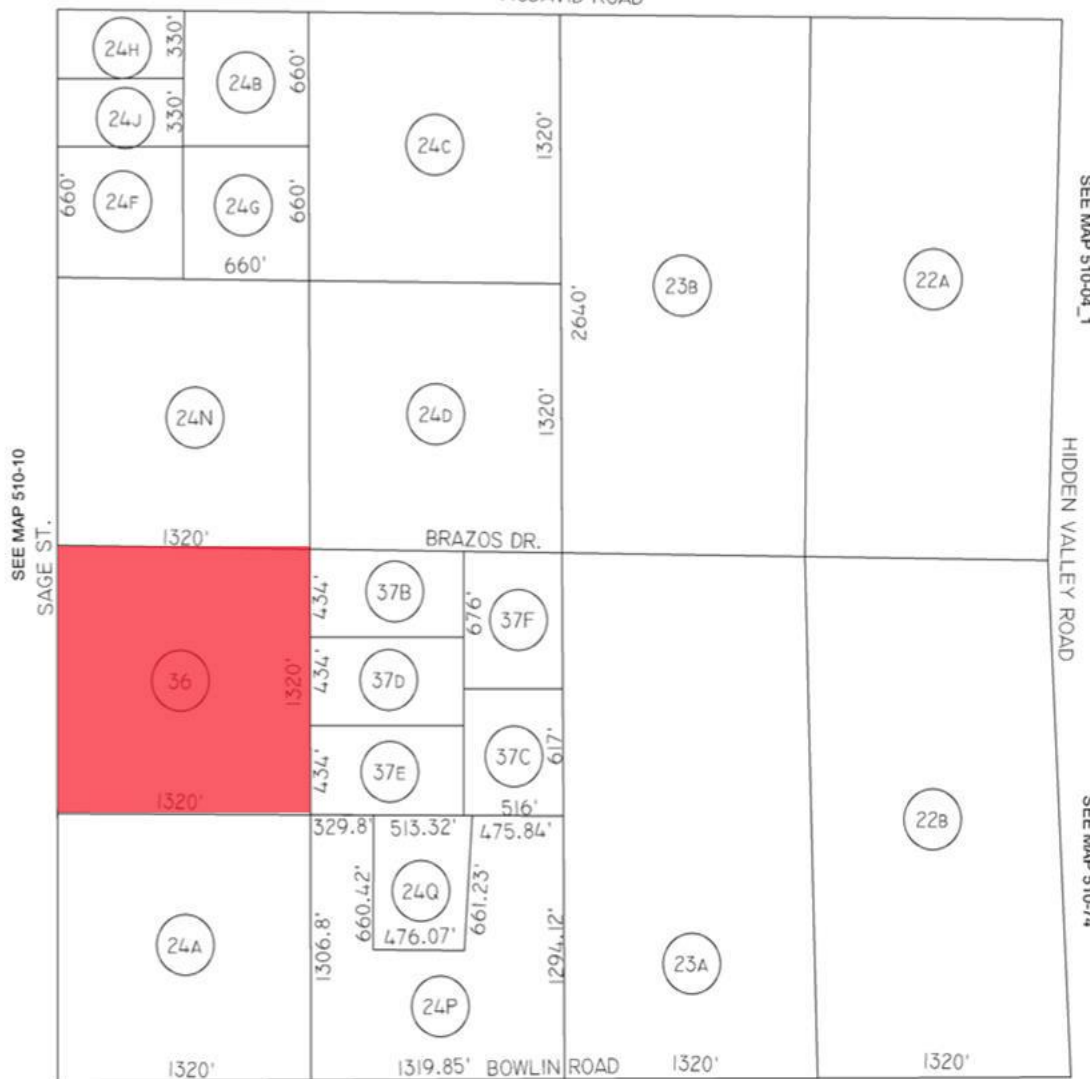




SEC. 28, TN.4S RG.2E

SEE MAP 510-75
MCDAVID ROAD

510-04_3

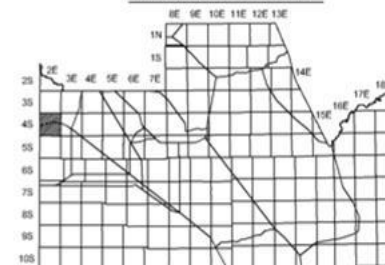


SEE MAP 510-04_1

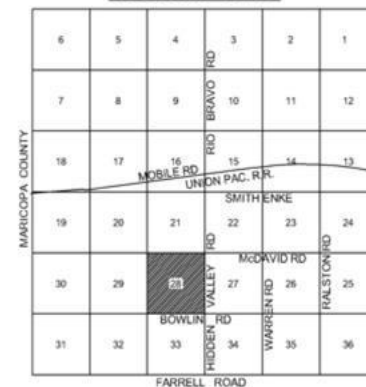
HIDDEN VALLEY ROAD

SEE MAP 510-74

LOCATION MAP



VICINITY MAP



FEET
0 200 400 600

2-2-2010
UPDATED BY CC

THIS MAP IS FOR VALUATION PURPOSES ONLY.
THIS OFFICE WILL NOT ASSUME LIABILITY FOR
REPRESENTATION, MEASUREMENTS OR ACREAGE.
SURVEYS & SUBDIVISION PLATS ARE ON FILE
WITH THE PINAL COUNTY RECORDERS OFFICE.

PINAL COUNTY ASSESSORS MAP

SEE MAP 510-11