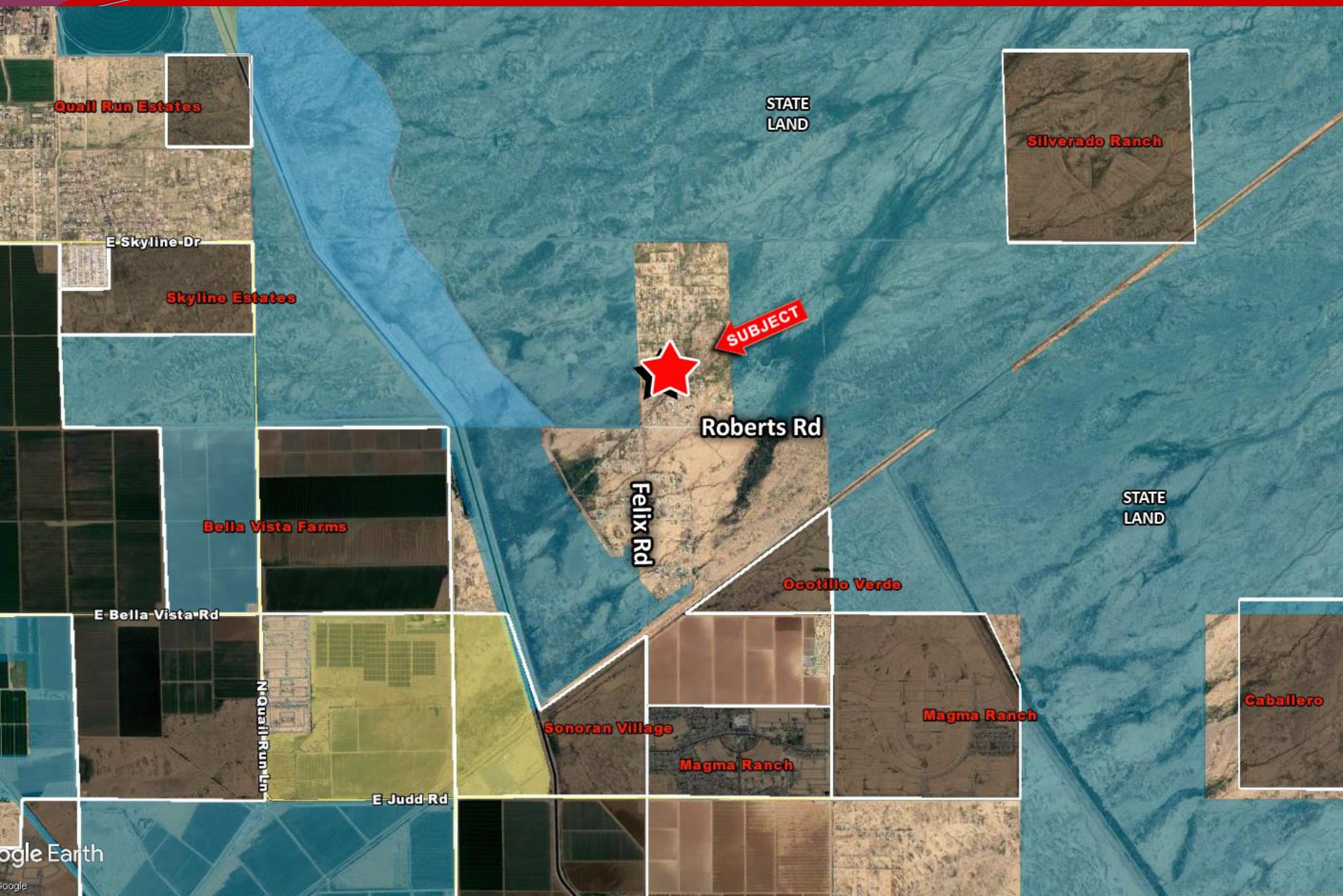


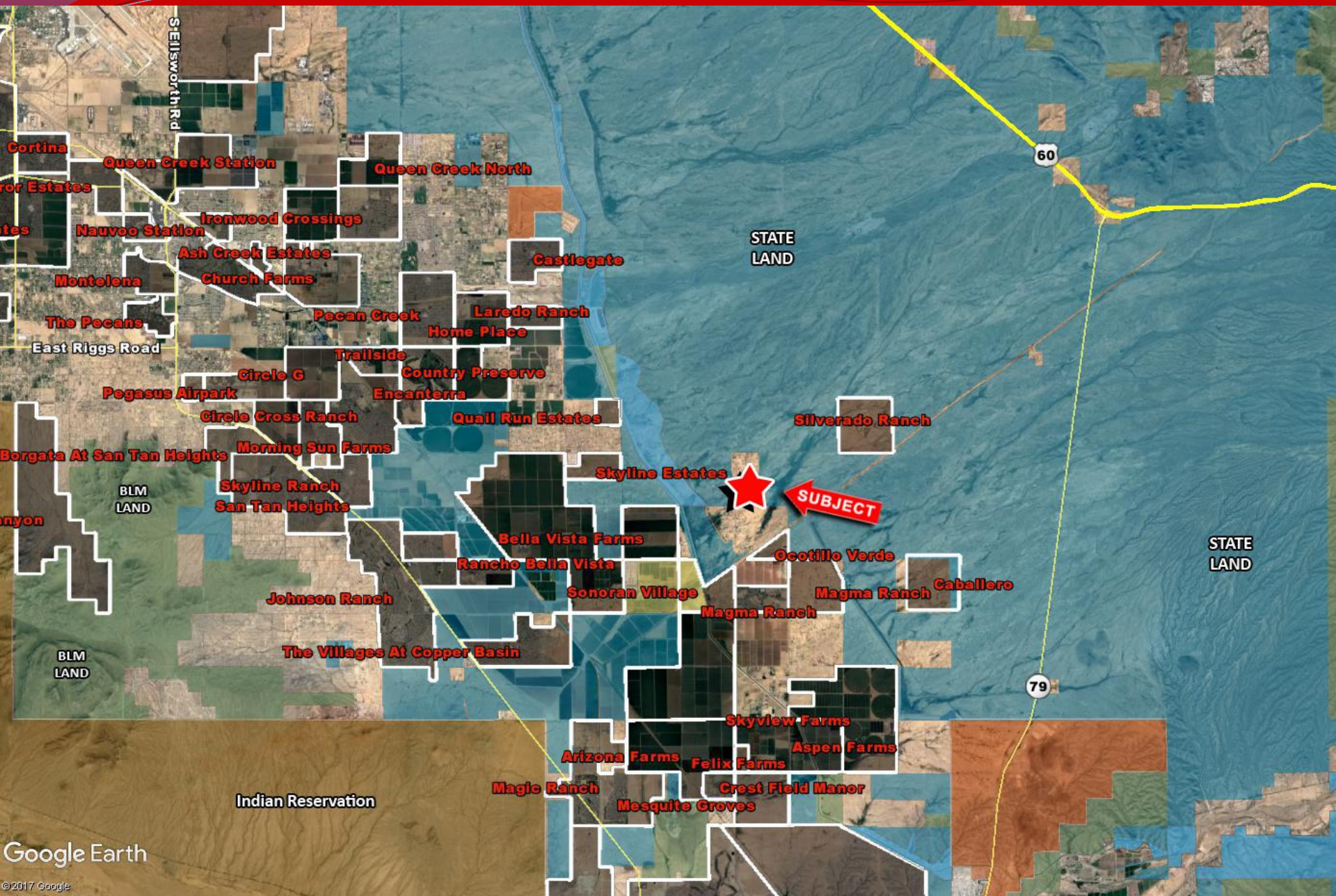
- ❑ **Location:** N of NEC Felix Road & Roberts Road, Pinal County, AZ
- ❑ **APN:** 210-35-001U, 001V, 001W, 001X, 001Y
- ❑ **Zoning:** GR- General Rural  
(1 unit per 1.25 Acres)
- ❑ **Size:** +/- 7.58 Acres
- ❑ **General Plan:** Moderate Low Density (Pinal County 1-3.5 du/ac)
- ❑ **Utilities:**
  - Electric- SRP
  - Water- Well
  - Sewer- Septic
- ❑ **Taxes:** \$1,238.36 (2017)
- ❑ **Price:** \$189,500 (\$25,000 per Acre)

## EXCLUSIVELY LISTED





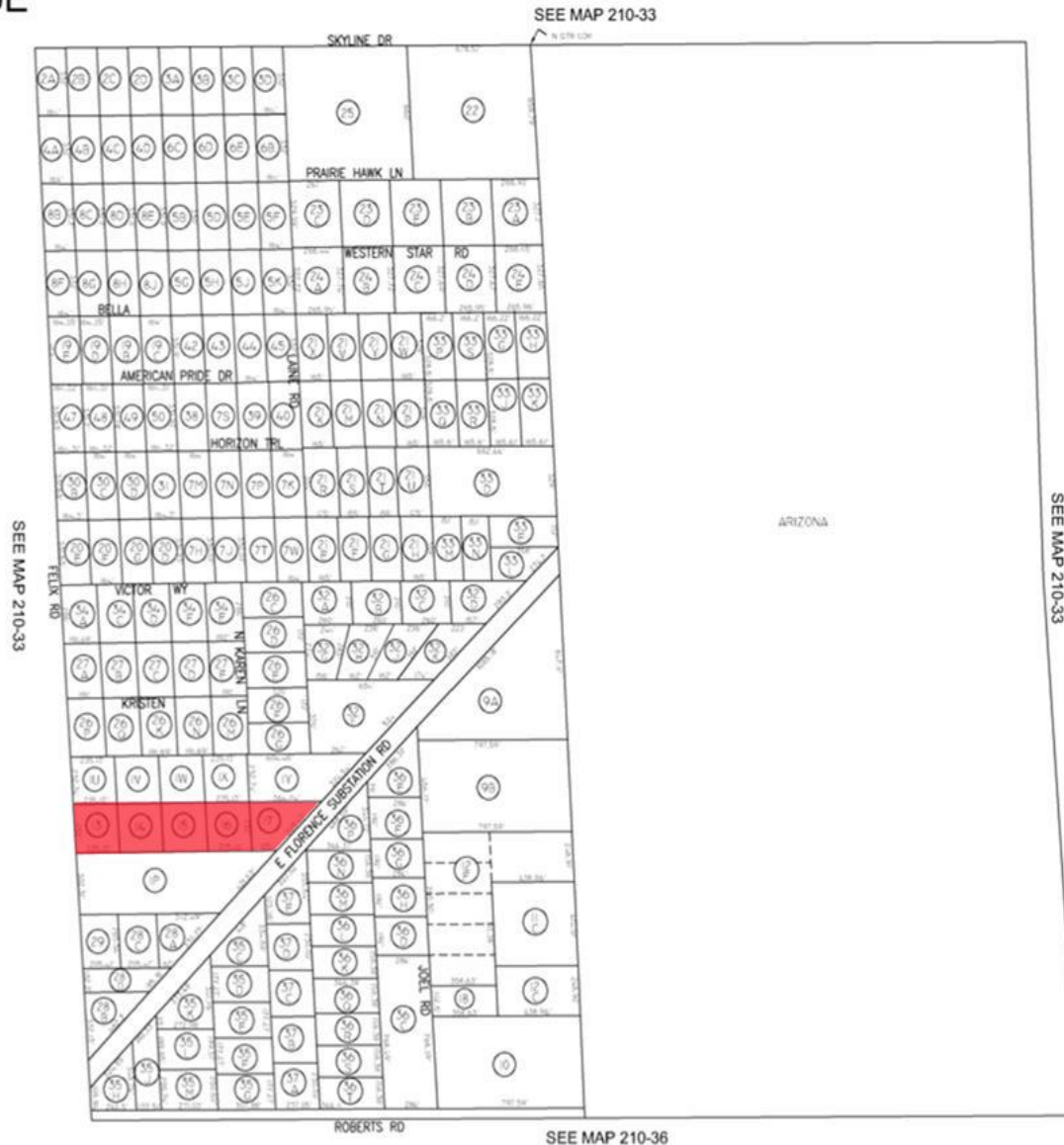




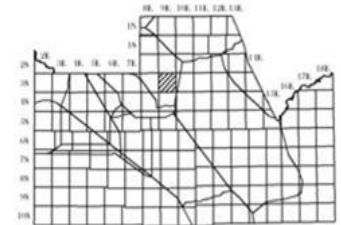


SEC. 8 TN.3S RG.9E

## 210-35



**LOCATION MAP**



**VICINITY MAP**



FEET  
0 200 400 600

4-21-2009  
UPDATED BY CC

THIS MAP IS FOR VALUATION PURPOSES ONLY.  
THIS OFFICE WILL NOT ASSUME LIABILITY FOR  
REPRESENTATION, MEASUREMENTS OR ACREAGE.  
SURVEYS & SUBDIVISION PLATS ARE ON FILE  
WITH THE PINAL COUNTY RECORDERS OFFICE.

PINAL COUNTY ASSESSORS MAP