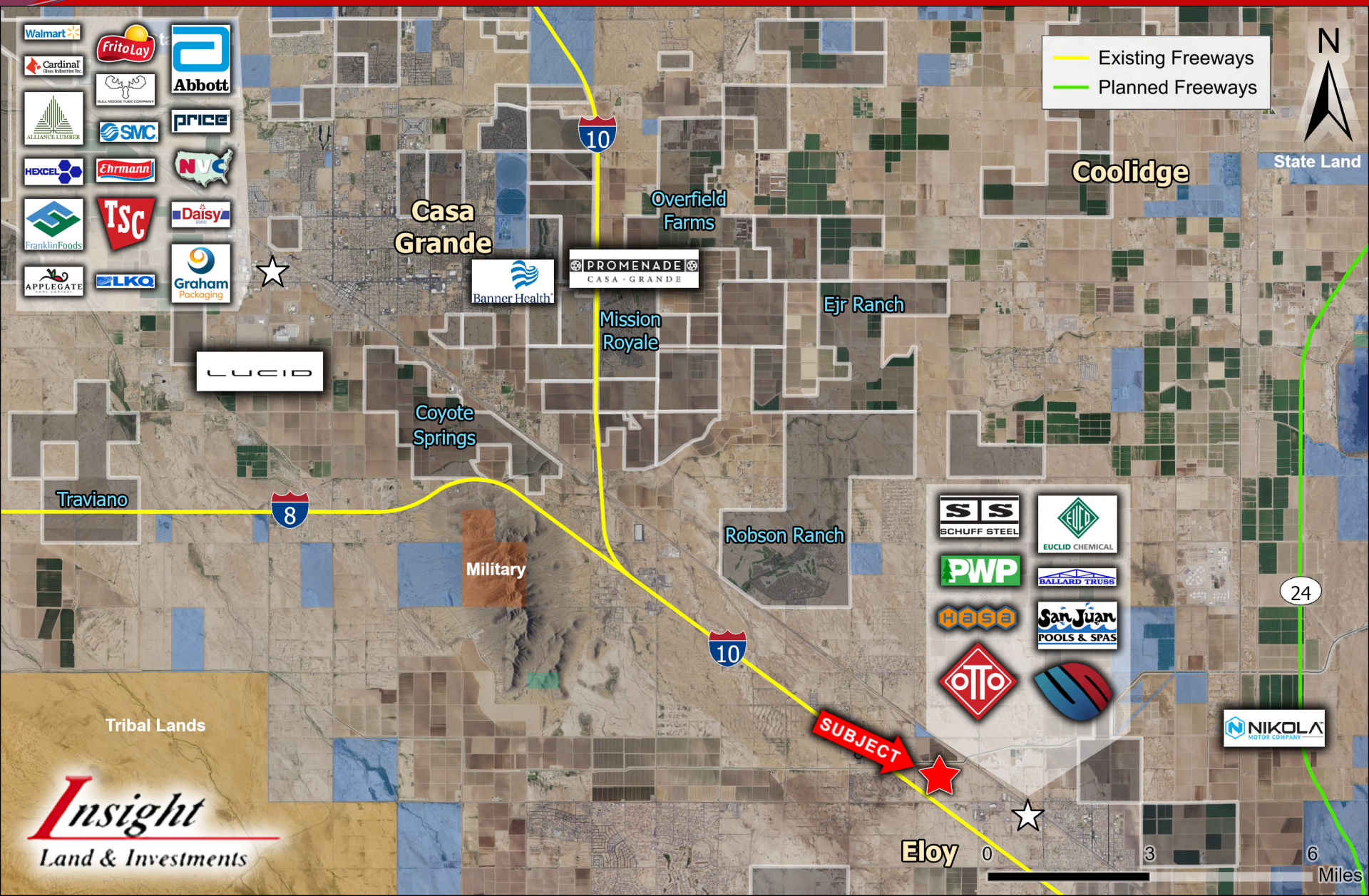




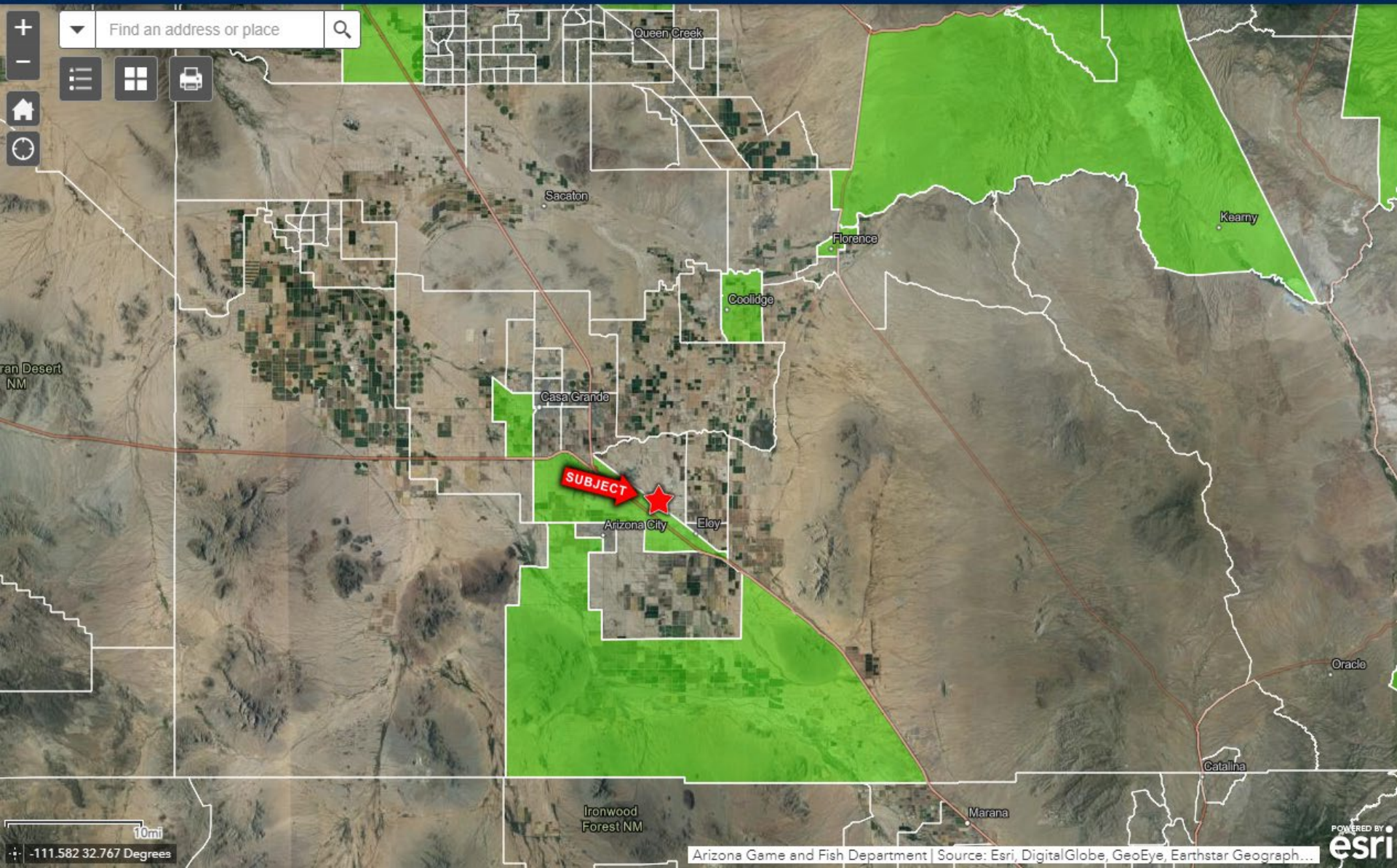
- ❑ **Location:** NE of I-10 and Battaglia Road, Eloy, AZ
- ❑ **APN:** 404-23-003E, 003K
- ❑ **Zoning:** Zoned I-1, City of Eloy
- ❑ **Size:** +/- 54.19 Acres
- ❑ **Price:** \$536,481 (\$9,900/Acre)
- ❑ **Comments:** Property is located just north of I-10 and Battaglia Road. Parcel lies within the Opportunity Zone. Water line runs along the southern boundary of the property. Seller will entertain all offers.

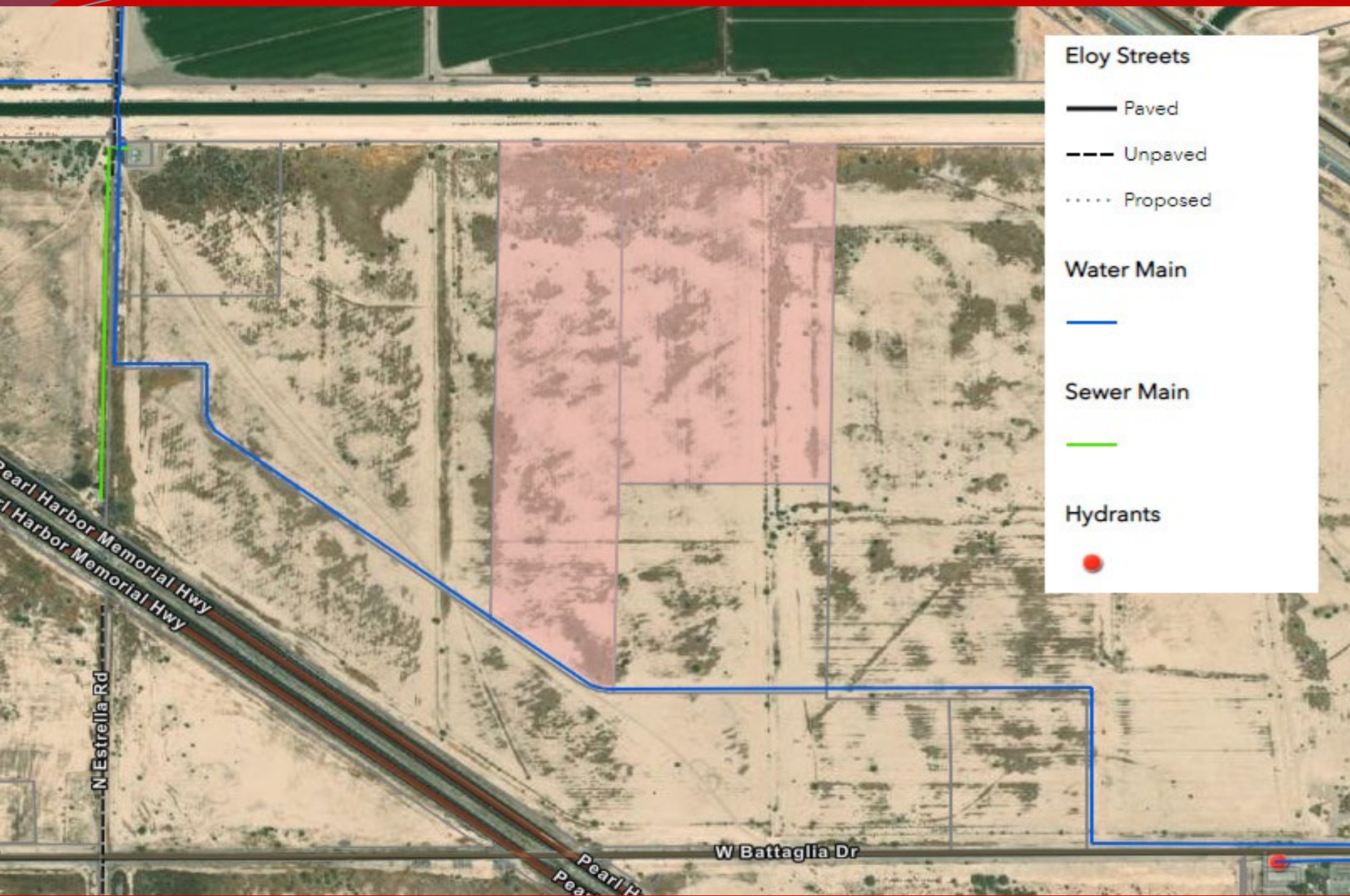
EXCLUSIVELY LISTED





ARIZONA Opportunity Zones
COMMERCE AUTHORITY





Eloy Streets

- Paved
- - - Unpaved
- Proposed

Water Main



Sewer Main



Hydrants



SEE MAP 404-21

HOUSER RD.

S.P.R.R.

HWY 84

C.A.P. 1284/838
S.R.A. - 000

SANTA ROSA CANAL S.R.A.-031

SEE MAP 404-22_1

CURRY RD.

TWEEDY RD.

SEE MAP 404-12

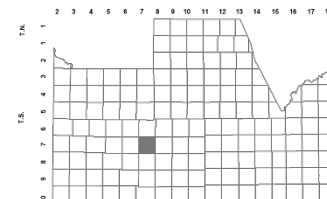
BATTAGLIA DR.
SEE 408-26_1

BOOK - MAP

404-23

SEC. 35 T.07S. R.07E.

LOCATION MAPS
R.E.



TOWNSHIP											
6	5	4	3	2	1	SELMA HWY					
CORNWALL RD						HANNARD RD					
7	8	9	10	11	12	TWEEDY RD					
SANTA ROSA CANAL											
19	20	21	22	23	24	SANTA ROSA CANAL					
30	29	28	27	26	25	SANTA ROSA CANAL					
31	32	33	34	35	36	SANTA ROSA CANAL					
SECTION											



0 800
Feet

Revised: 03/12/2018

By: K G



PINAL COUNTY
WIDE OPEN OPPORTUNITY

Pinal County Assessor

THIS MAP DOES NOT REPRESENT A SURVEY. NO LIABILITY IS ASSUMED FOR THE ACCURACY OF THE DATA DELINEATED HEREIN, EITHER EXPRESSED OR IMPLIED BY PINAL COUNTY OR ITS EMPLOYEES. THIS MAP IS COMPILED FROM OFFICIAL RECORDS, INCLUDING PLATS, SURVEYS, RECORDED DEEDS AND CONTRACTS, AND ONLY CONTAINS INFORMATION REQUIRED FOR THE PINAL COUNTY ASSESSOR'S OFFICE PURPOSES.