

Location: NEC of Centennial Rd and 557th Ave in Tonopah, AZ

APN(s): 506-21-020A

Zoning: RU-190

Size: +/- 40.35 Acres

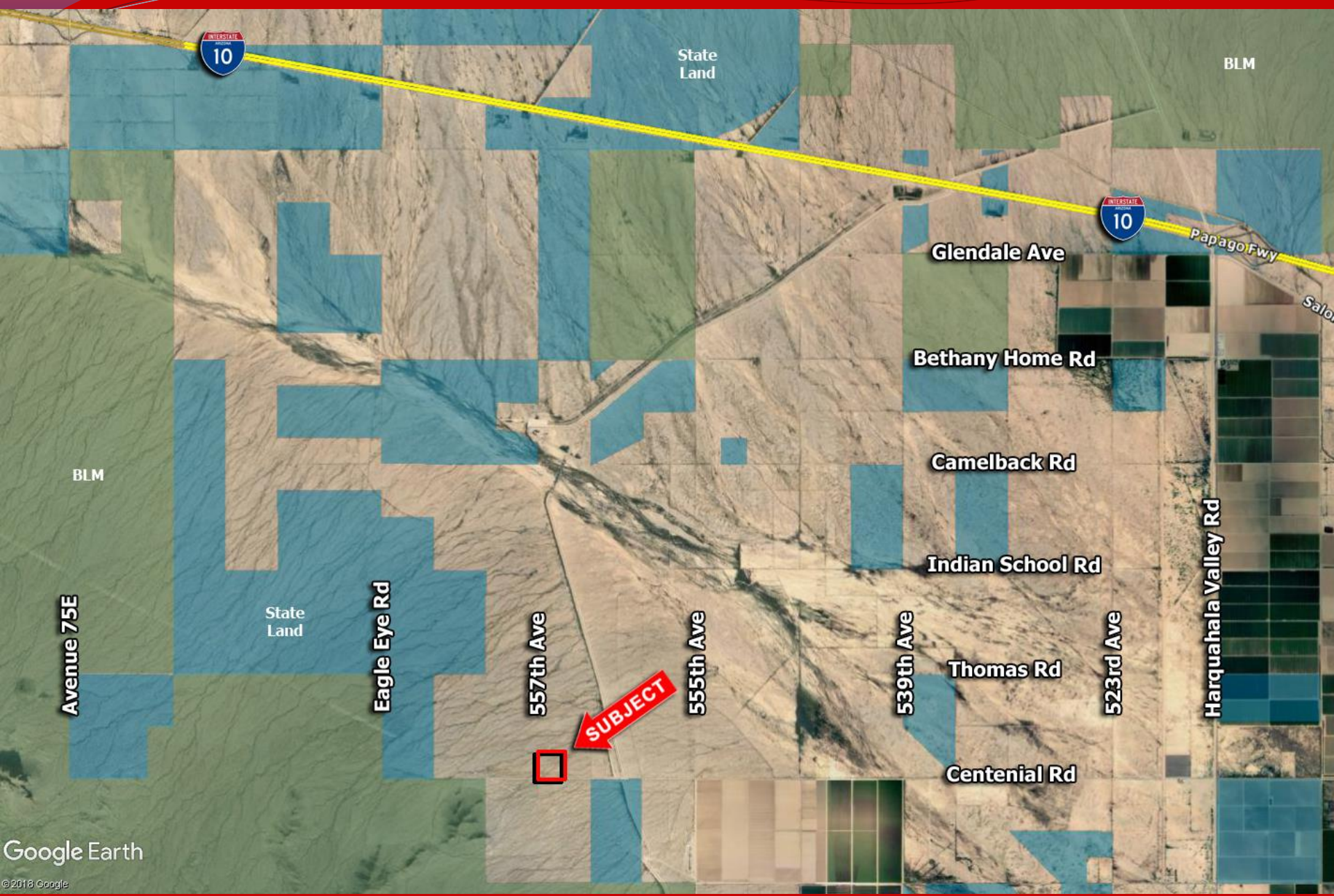
Price: \$80,000 or \$2,000/acre

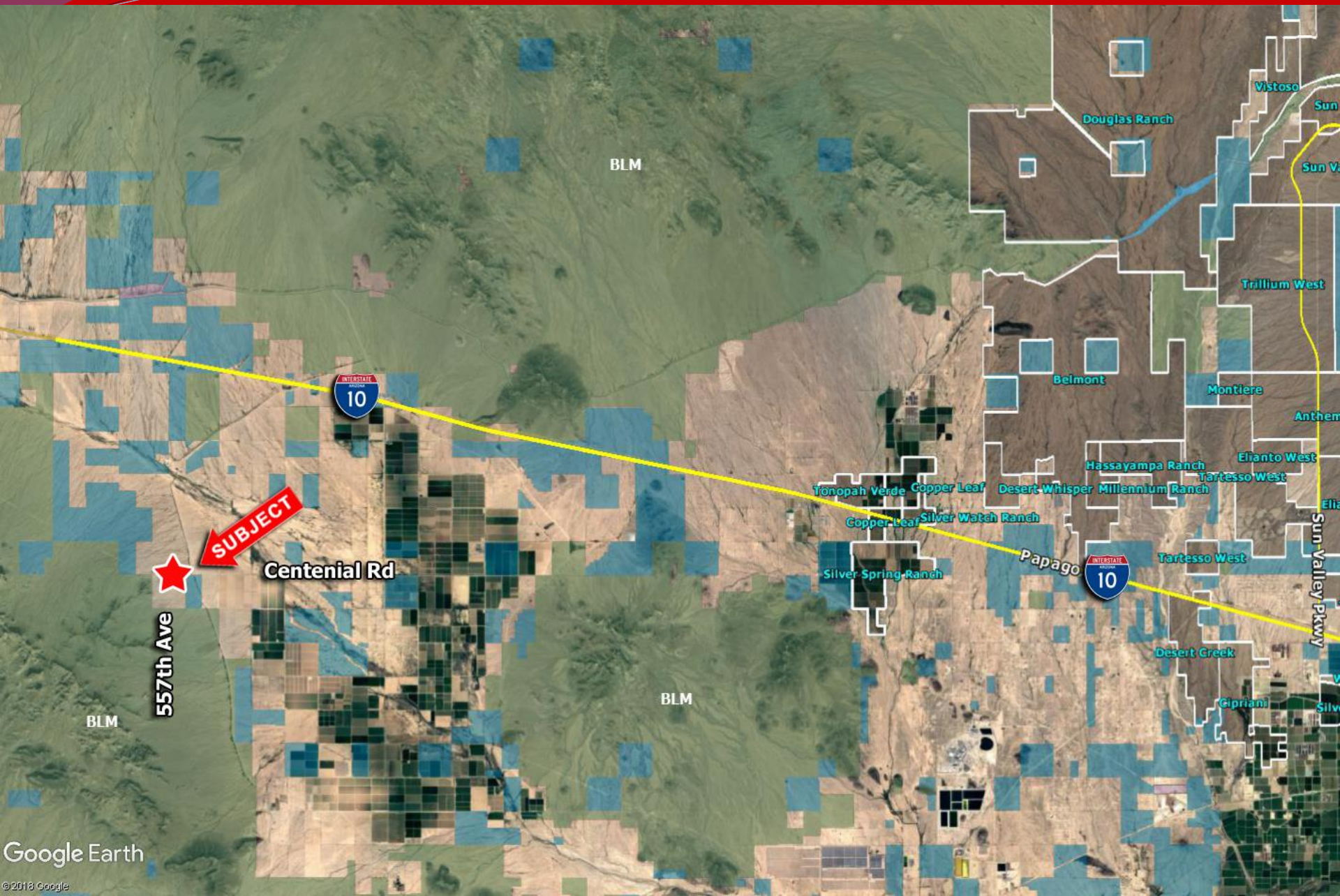
Terms: Seller May Carry

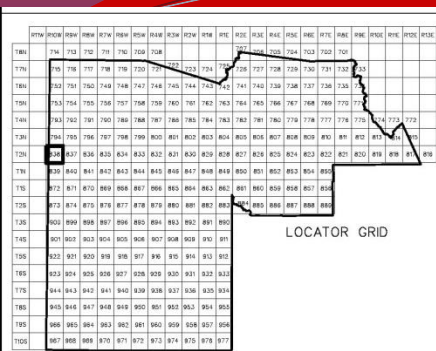
Comments:

- 1,320' of Frontage on Centennial Road.
- Zero floodplain impact.
- Well priced investment with great future potential .

MARICOPA COUNTY, ARIZONA







SECTION					
06	05	04	03	02	01
07	08	09	10	11	12
18	17	16	15	14	13
19	20	21	22	23	24
30	29	28	27	26	25
31	32	33	34	35	36

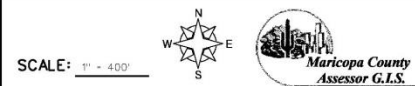
1/4 SECTION		
N	01	
W	02	03
E	04	
S		

1/4 SECTION		
N	01	
W	02	03
E	04	
S		

ASSESSOR BOOKS & MAPS WITHIN THIS AREA

BOOK: 506 MAP: 21
BOOK: 506 MAP: 25
BOOK: 506

SUBDIVISIONS



MARICOPA COUNTY ASSESSOR'S OFFICE
301 W. JEFFERSON ST.
PHOENIX, AZ 85003
www.maricopa.gov/assessor

LEGEND:

- Subdivision Boundary Line
- Subdivision Boundary Corner
- Street Centerline
- Street Centerline Marker
- Section Corner Marker
- Indicates change in original boundary
- Parcel Boundary Line
- Parcel Split Line
- Parcel Number
- Parcel Boundary Tie-In
- SECTION INFORMATION IS LOCATED ON A SEPARATE DOCUMENT

Disclaimer - Indemnification

Requester/Purchaser understands and agrees that Maricopa County does not guarantee the accuracy of the data and information requested and hereby expressly disclaims any responsibility for the truth, lack of truth, validity, inaccuracy, accuracy, timeliness of any data and information. The parcel line on maps are for illustration purposes only and are not intended to be used as a survey product.

