



- **Location:** Property is North of the Northwest Corner of 387th Ave and Northern Ave, Maricopa County, Arizona.
- **APN:** 506-37-121
- **Size:** +/- 36.14 Acres
- **Zoning:** RU-43
- **Price:** Submit
- **Comments:** Property is just off pavement to the South. Power is in the area, serviced by APS. Excellent investment or 1031 exchange. Seller will consider a terms sale with 20% down payment.

**Great Investment Opportunity | Exclusively Available**

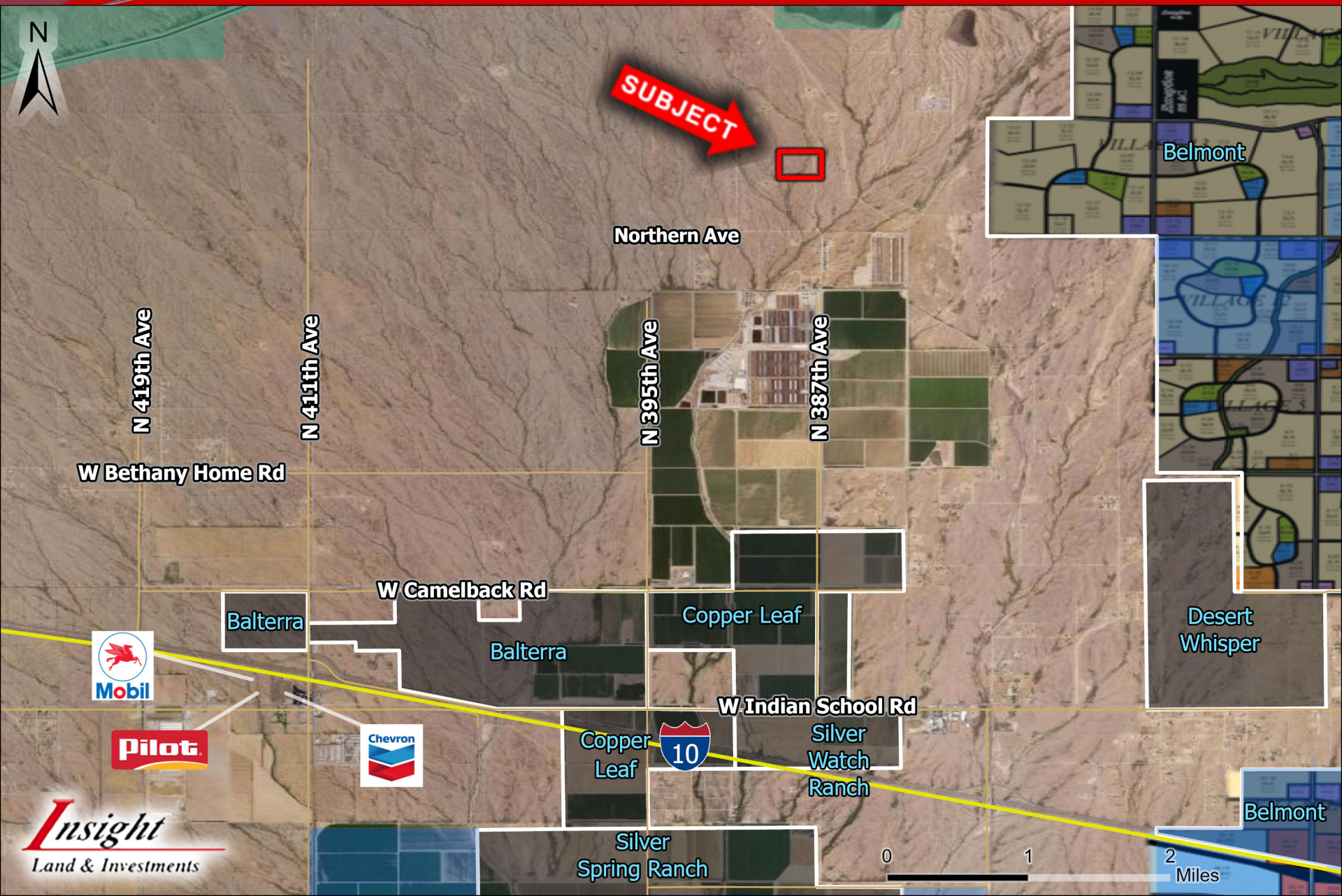
**Insight Land & Investments**  
7400 E McDonald Dr, Ste 121  
Scottsdale, Arizona 85250  
602.385.1535  
[www.insightland.com](http://www.insightland.com)

All information furnished regarding property for sale, rental or financing is from sources deemed reliable, but no warranty or representation is made to the accuracy thereof and same is subject to errors, omissions, change of price, rental or other conditions prior to sale, lease or financing or withdrawal without notice. No liability of any kind is to be imposed on the broker herein.

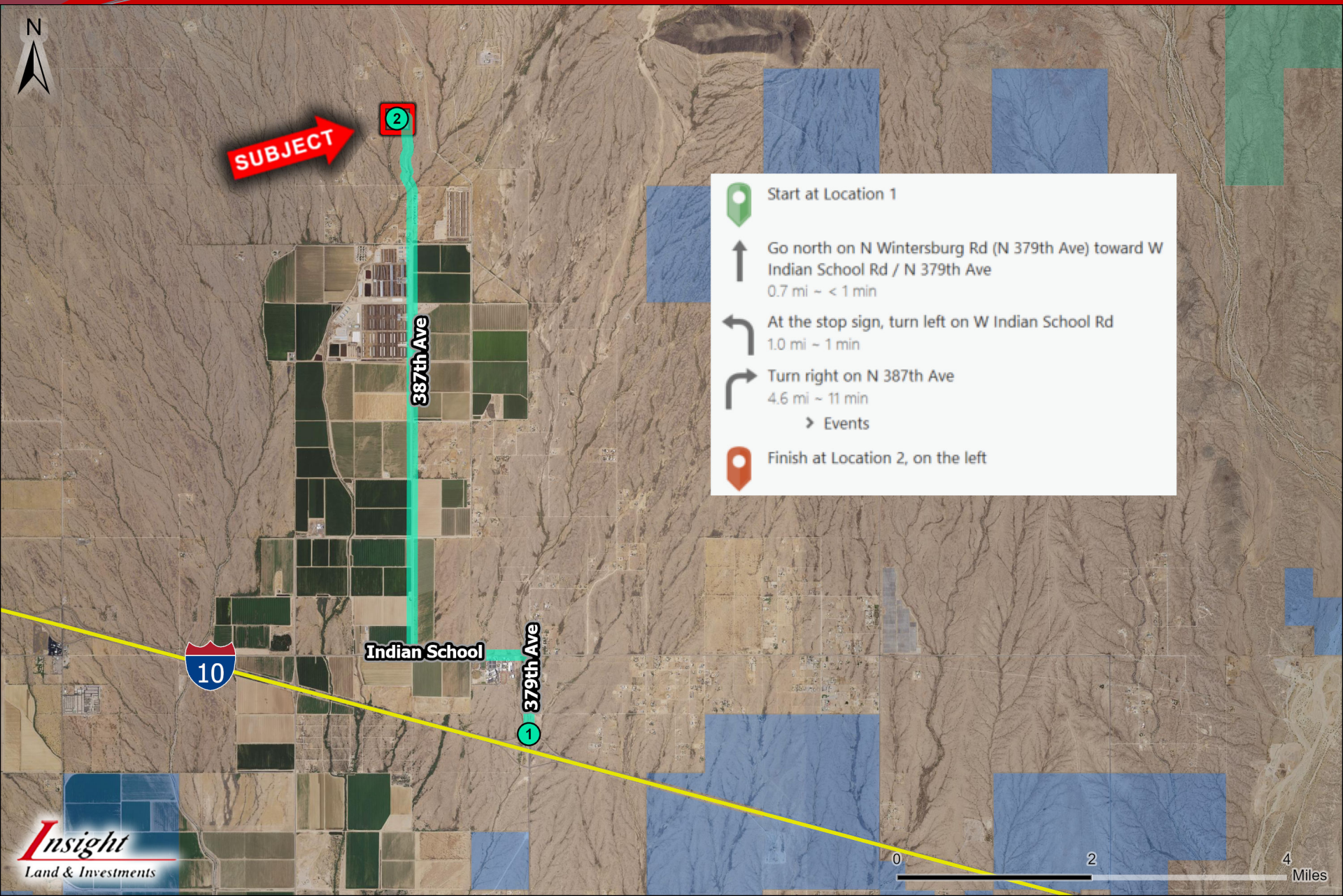
**JOE WERNER**  
Direct: 602-385-0567  
[jwerner@insightland.com](mailto:jwerner@insightland.com)

**SHARON CONTORNO**  
Direct: 602-620-6626  
[sharoncontorno@gmx.com](mailto:sharoncontorno@gmx.com)











**MARICOPA COUNTY**  
OFFICIAL PARCEL MAP  
STATE OF ARIZONA

**SECTION 32 T03N R06W**  
MAP ID • 798 - 32 - 00 - 00

LOCATOR GRID

SECTION

06	05	04	03	02	01
07	08	09	10	11	12
13	14	15	16	17	18
19	20	21	22	23	24
25	26	27	28	29	30
31	32	33	34	35	36

1/4 SECTION N  
W E  
S

1/4 1/4 SECTION  
N E  
S

ASSESSOR BOOKS & MAPS WITHIN THIS AREA

BOOK: 506 MAP: 36  
BOOK: 506 MAP: 37  
BOOK: 506 MAP: 39

**SUBDIVISIONS**  
SILVER STAR RANCH 2ND AMD  
MCR 410-34, 1997 SUB

SCALE: 1" = 400'

MARICOPA COUNTY ASSESSOR'S OFFICE  
301 W. JEFFERSON ST.  
PHOENIX, AZ 85003  
www.maricopa.gov/assessor

09-11-2009

**LEGEND**

- Subdivision Boundary Line
- Subdivision Boundary Corner
- Street Centerline
- Street Centerline Marker
- Section Corner Marker
- Indicates change in original boundary
- Parcel Boundary Line
- Parcel Split Line
- Parcel Number
- Parcel Boundary Line
- Parcel Boundary Line

REVISION INFORMATION IS LOCATED ON A SEPARATE DOCUMENT

Disclaimer - Indemnification  
Buyer/Client/Investor/Assignee and others who use this map and information contained herein do so at their own risk. The Assessor's Office does not warrant the accuracy of the map or information contained herein. The Assessor's Office is not responsible for any errors or omissions on this map or information contained herein. The Assessor's Office is not responsible for any errors or omissions on this map or information contained herein. The Assessor's Office is not responsible for any errors or omissions on this map or information contained herein.

