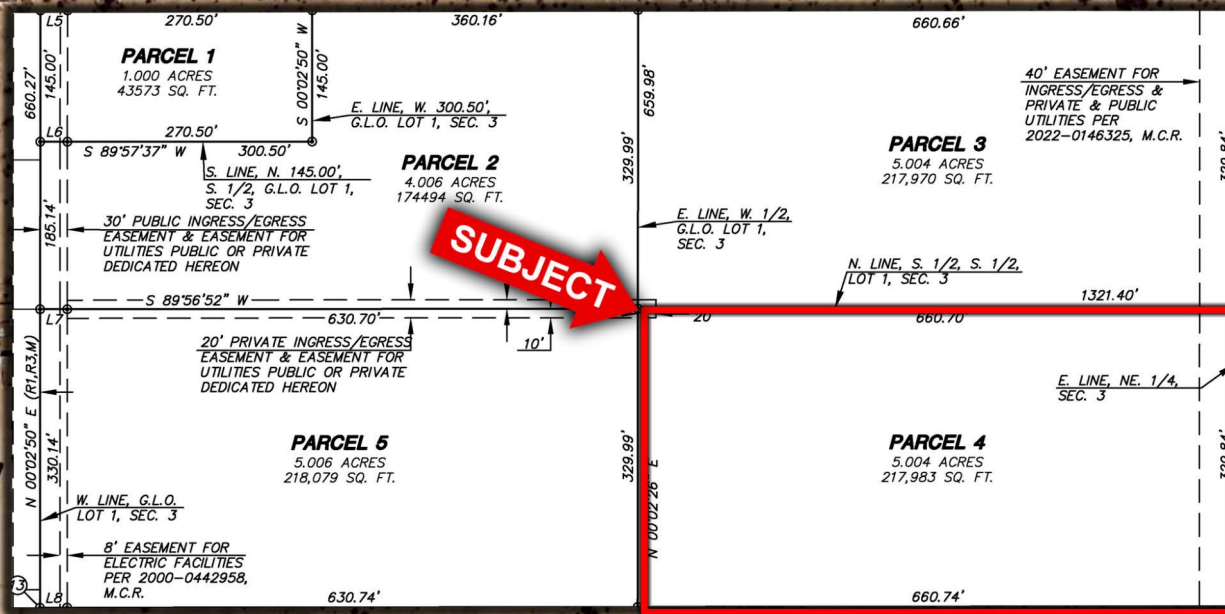




- **Location:** 373rd Ave & Culver Street
- **Size:** 5 Acres
- **Zoning:** RU-43
- **Utilities:** Power to Property
- **Price:** \$95,000 (\$19,000/acre)
- **Comments:**
 - ✓ Cheap price per acre with huge upside potential.
 - ✓ Flat property with easy access from I-10 on Wintersburg Rd.
 - ✓ Permanently unobstructed views to the East due to Stand Land border.
 - ✓ Approximately 3 miles from Ruth Fisher Elementary School.

Great Investment Opportunity | Exclusively Available



Culver St

