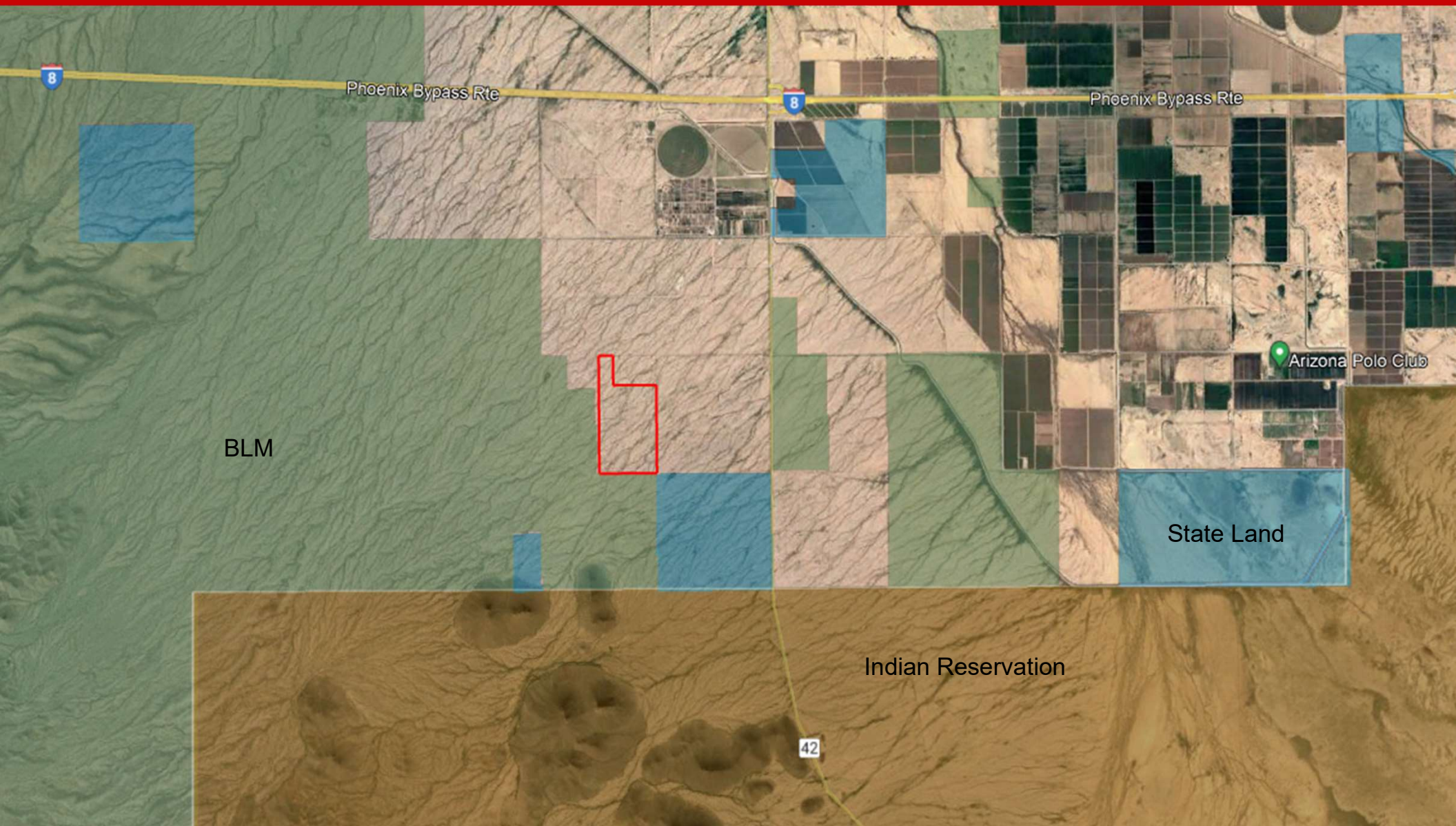
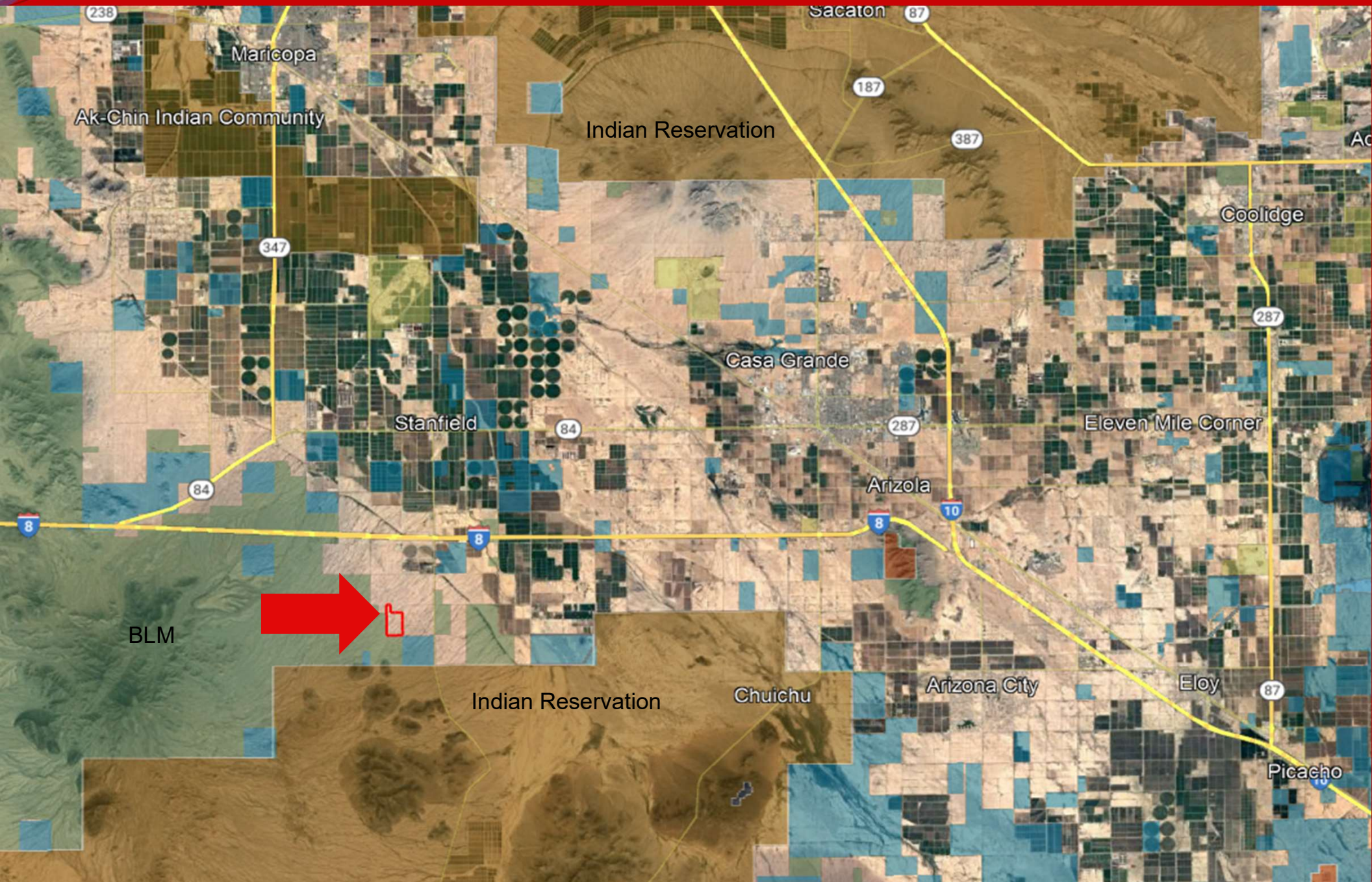
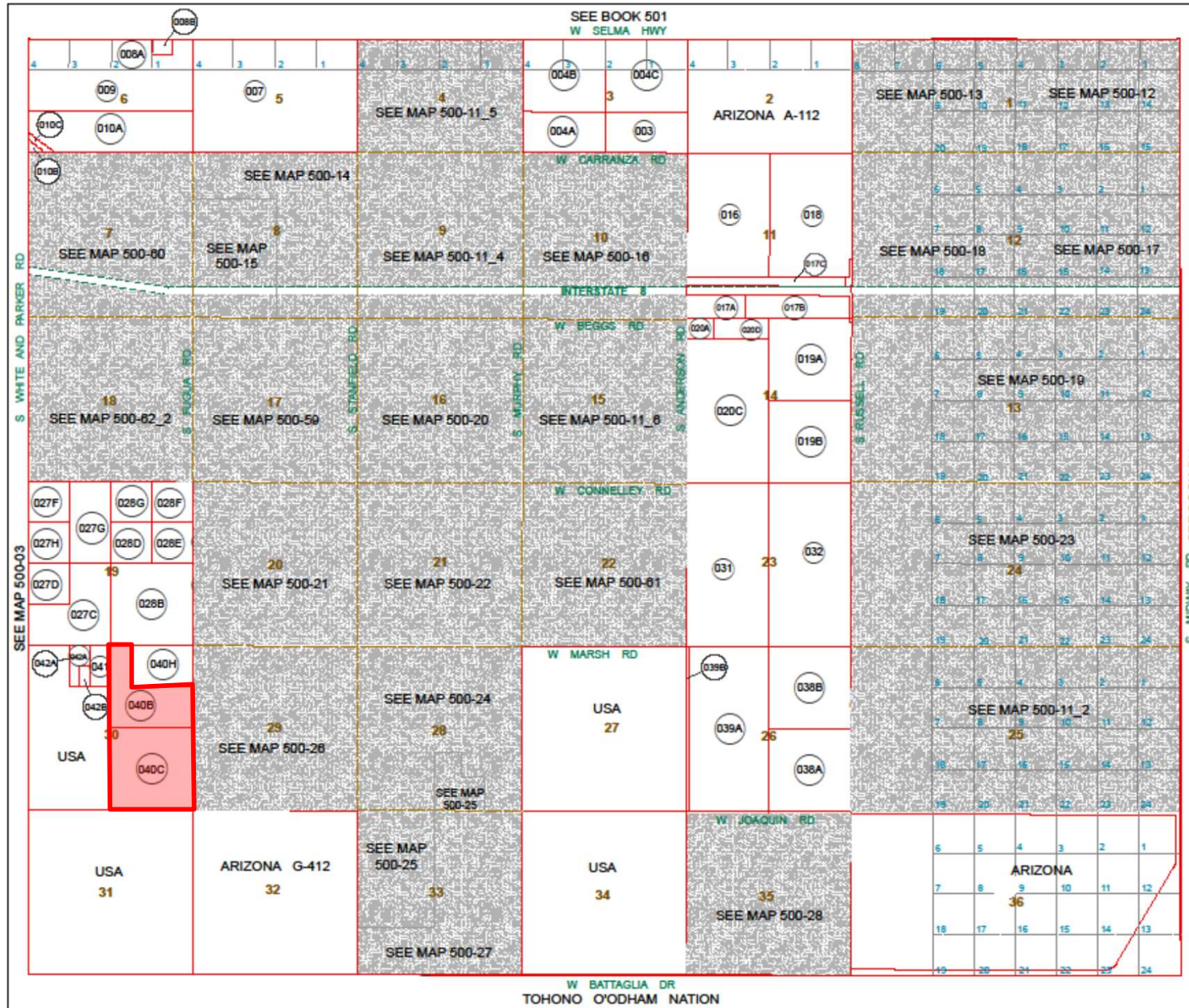


- ☐ **Location:** W of NWC Stanfield Road & Joaquin Road, Pinal County.
- ☐ **APN:** 500-11-040B, 040C
- ☐ **Zoning:** GR (1.25 acre minimum lot size)
- ☐ **Size:** +/- 260 Acres
- ☐ **Price:** \$1,040,000 or \$4,000/ac
- ☐ **Taxes:** \$1,265 (2021)
- ☐ **Comments:** Subject property is located west of the NWC Stanfield Road and Joaquin Road just 2 miles south of Interstate 8. Excellent investment or 1031 exchange.

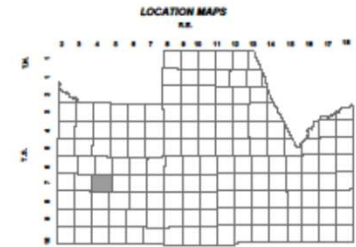
EXCLUSIVELY LISTED







BOOK - MAP
500-11_1
T.07S. R.04E.



TOWNSHIP

1	2	3	4	5	6
7	8	9	10	11	12
13	14	15	16	17	18
19	20	21	22	23	24
25	26	27	28	29	30
31	32	33	34	35	36

SECTION



Revised: 4/17/2012
By: **TH**



PINAL COUNTY
with your approval

Pinel County Assessor

THIS MAP DOES NOT REPRESENT A SURVEY. NO LIABILITY IS ASSUMED FOR THE ACCURACY OF THE DATA DELINEATED HEREIN, EITHER EXPRESSED OR IMPLIED BY PINAL COUNTY OR ITS EMPLOYEES. THIS MAP IS COMPILED FROM OFFICIAL RECORDS, INCLUDING PLATS, SURVEYS, RECORDED DEEDS AND CONTRACTS, AND ONLY CONTAINS INFORMATION REQUIRED FOR THE PINAL COUNTY ASSESSOR'S OFFICE PURPOSES.