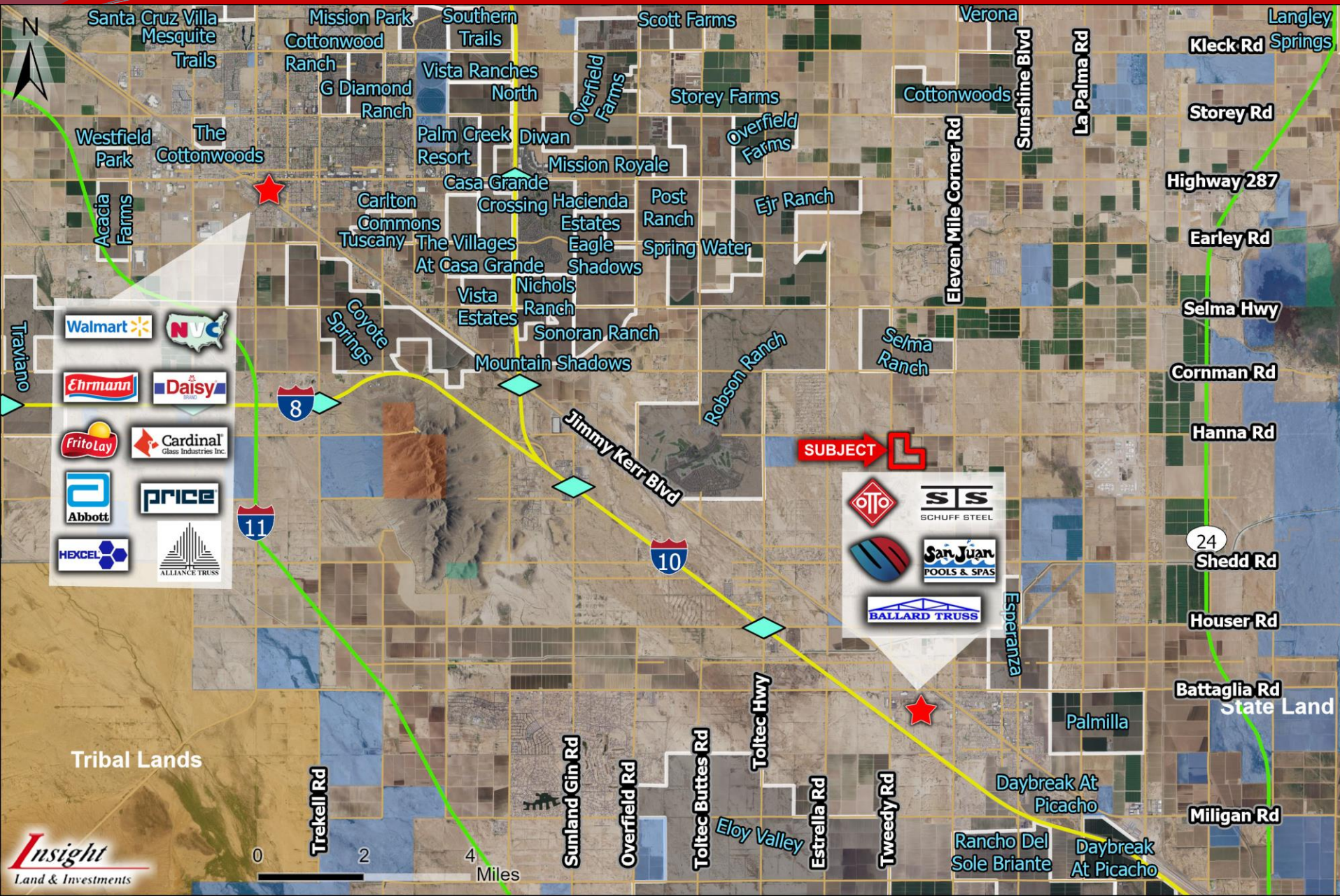


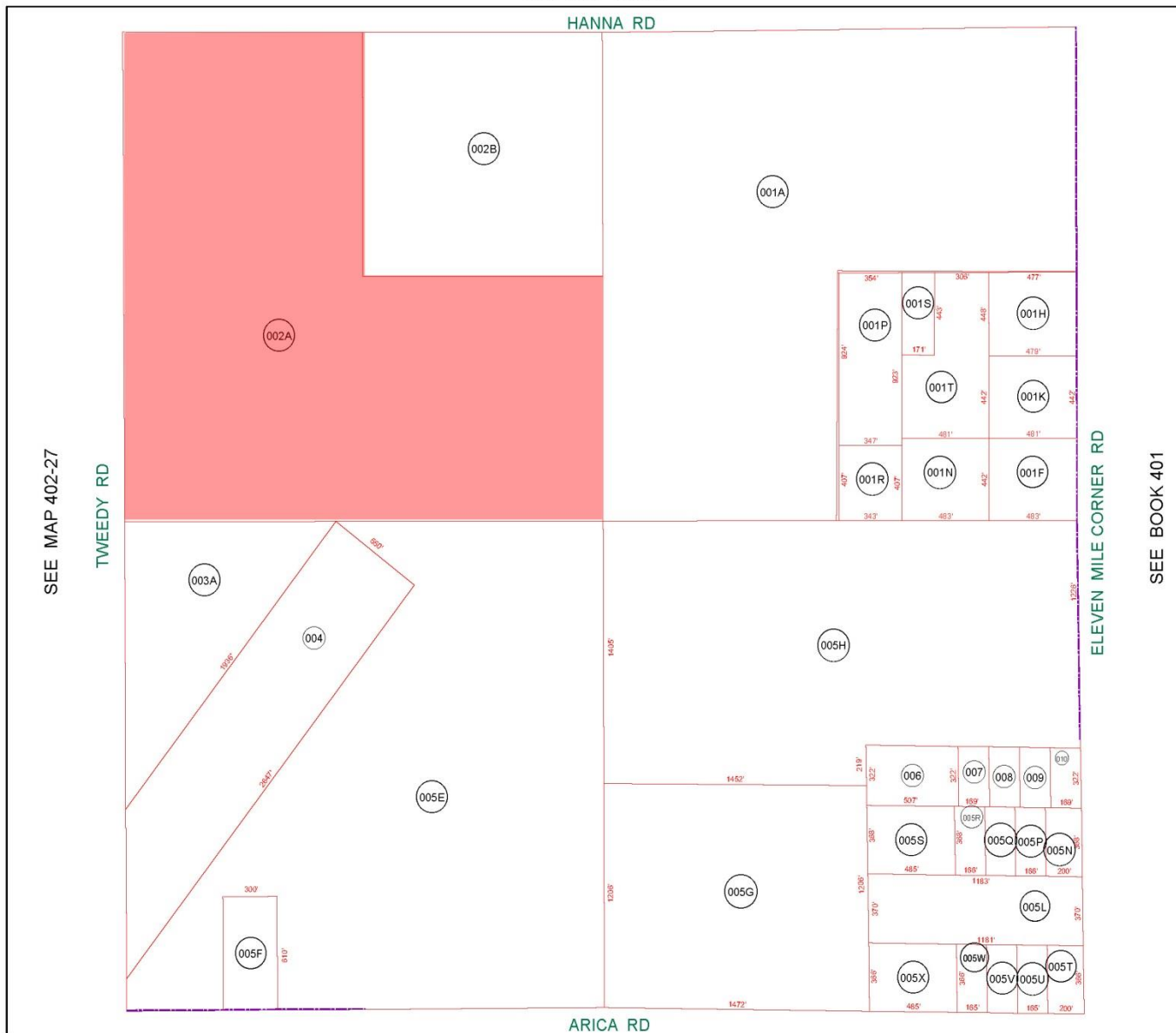
- ❑ **Location:** SEC Hanna Rd & Tweedy Rd, Eloy, AZ
- ❑ **APN:** 402-26-002A
- ❑ **Zoning:** GR- General Rural (1 unit per 1.25 ac)
- ❑ **General Plan:** LI- Light Industrial (City of Eloy)
- Size:** +/- 120 Acres
- ❑ **Price:** \$8,500 / AC
- ❑ **Comments:** Property is located in Pinal County near Eloy Airport with paved access along Hanna Road. Great speculative investment or 1031 exchange.

EXCLUSIVELY LISTED





SEE MAP 402-25



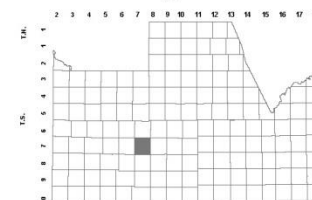
SEE BOOK 401

BOOK - MAP

402-26

SEC. 13 T.07S. R.07E.

LOCATION MAPS
RE:



TOWNSHIP

6	5	4	3	2	1
7	8	9	10	11	12
18	17	16	15	14	13
19	20	21	22	23	24
30	29	28	27	26	25
31	32	33	34	35	36

SECTION



Revised: 08/06/2010

By: TH



PINAL COUNTY
wide open opportunity

Pinal County Assessor

THIS MAP DOES NOT REPRESENT A SURVEY. NO LIABILITY IS ASSUMED FOR THE ACCURACY OF THE DATA DELINEATED HEREIN, EITHER EXPRESSED OR IMPLIED BY PINAL COUNTY OR ITS EMPLOYEES. THIS MAP IS COMPILED FROM OFFICIAL RECORDS, INCLUDING PLATS, SURVEYS, RECORDED DEEDS AND CONTRACTS, AND ONLY CONTAINS INFORMATION REQUIRED FOR THE PINAL COUNTY ASSESSOR'S OFFICE PURPOSES.

SEE BOOK 401