

- ❑ **Location:** SEC Hanna Rd & Tweedy Rd, Eloy, AZ
- ❑ **APN:** 402-26-002A
- ❑ **Zoning:** GR- General Rural (1 unit per 1.25 ac)
- ❑ **General Plan:** LI- Light Industrial (City of Eloy)
- ❑ **Size:** +/- 120 Acres
- ❑ **Price:** \$15,000 / AC
- ❑ **Comments:** Property is located in Pinal County near Eloy Airport with paved access along Hanna Road. Great speculative investment or 1031 exchange.

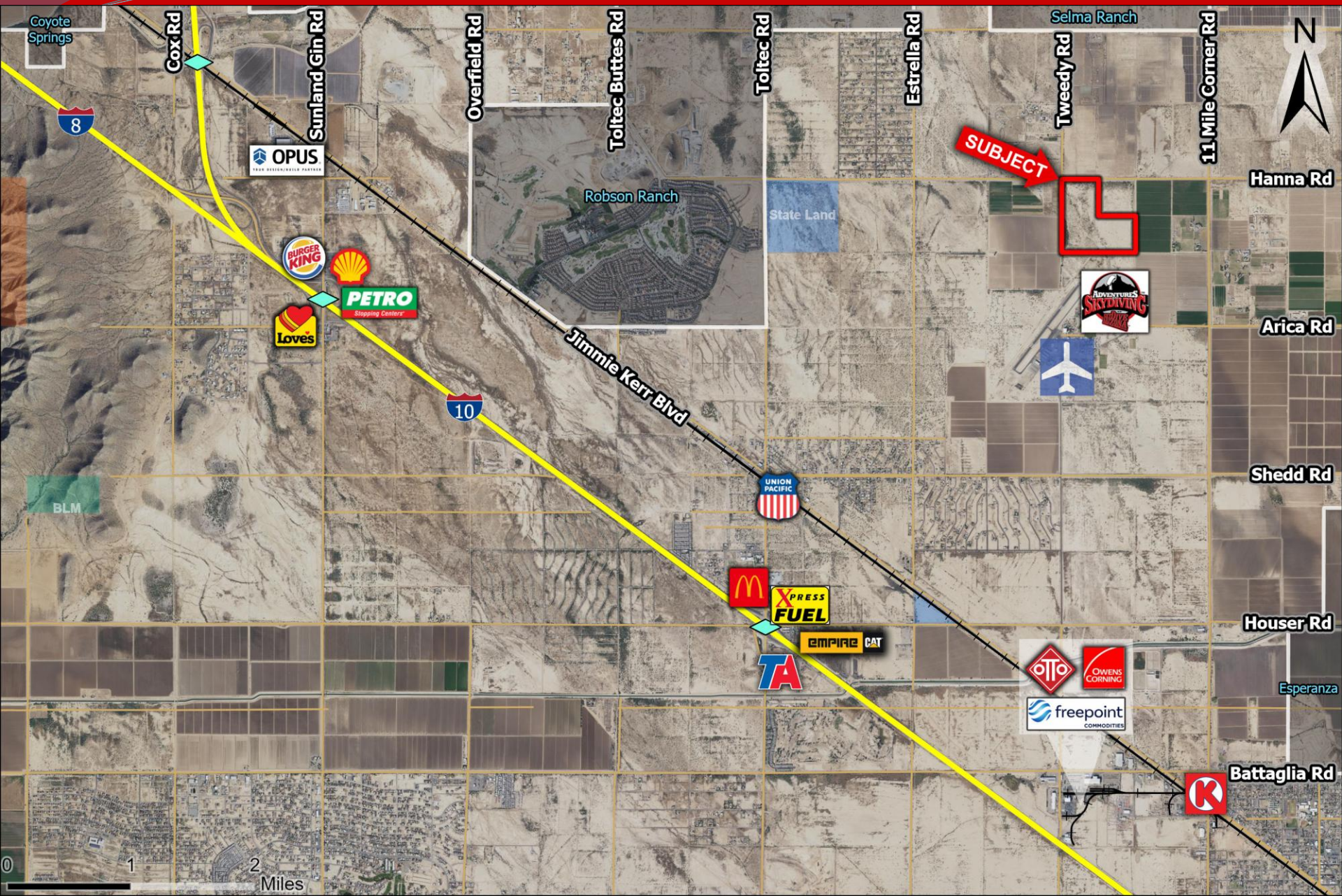
EXCLUSIVELY LISTED

Insight Land & Investments
7400 E McDonald Dr, Ste 121
Scottsdale, Arizona 85250
602.385.1515
www.insightland.com

All information furnished regarding property for sale, rental or financing is from sources deemed reliable, but no warranty or representation is made to the accuracy thereof and same is subject to errors, omissions, change of price, rental or other conditions prior to sale, lease or financing or withdrawal without notice. No liability of any kind is to be imposed on the broker herein.

Kenneth Reycraft
Direct: 602-385-1529
kreycraft@insightland.com

Mike Allen
Direct: 602-385-1511
mallen@insightland.com



Coyote Springs

Cox Rd

Sunland Gin Rd

Overfield Rd

Toltec Buttes Rd

Toltec Rd

Estrella Rd

Selma Ranch

Tweedly Rd

1.1 Mile Corner Rd

Hanna Rd

Arica Rd

Shedd Rd

Houser Rd

Esperanza

Battaglia Rd

OPUS

Robson Ranch

State Land

SUBJECT

BURGER KING

SHELL

Loves

PETRO

Jimmie Kerr Blvd

UNION PACIFIC

McDonald's

XPRESS FUEL

EMPIRE CAT

TA

ADVENTURE SKYDIVING

Airplane icon

OTO

OWENS CORNING

freepoint COMMODITIES

K

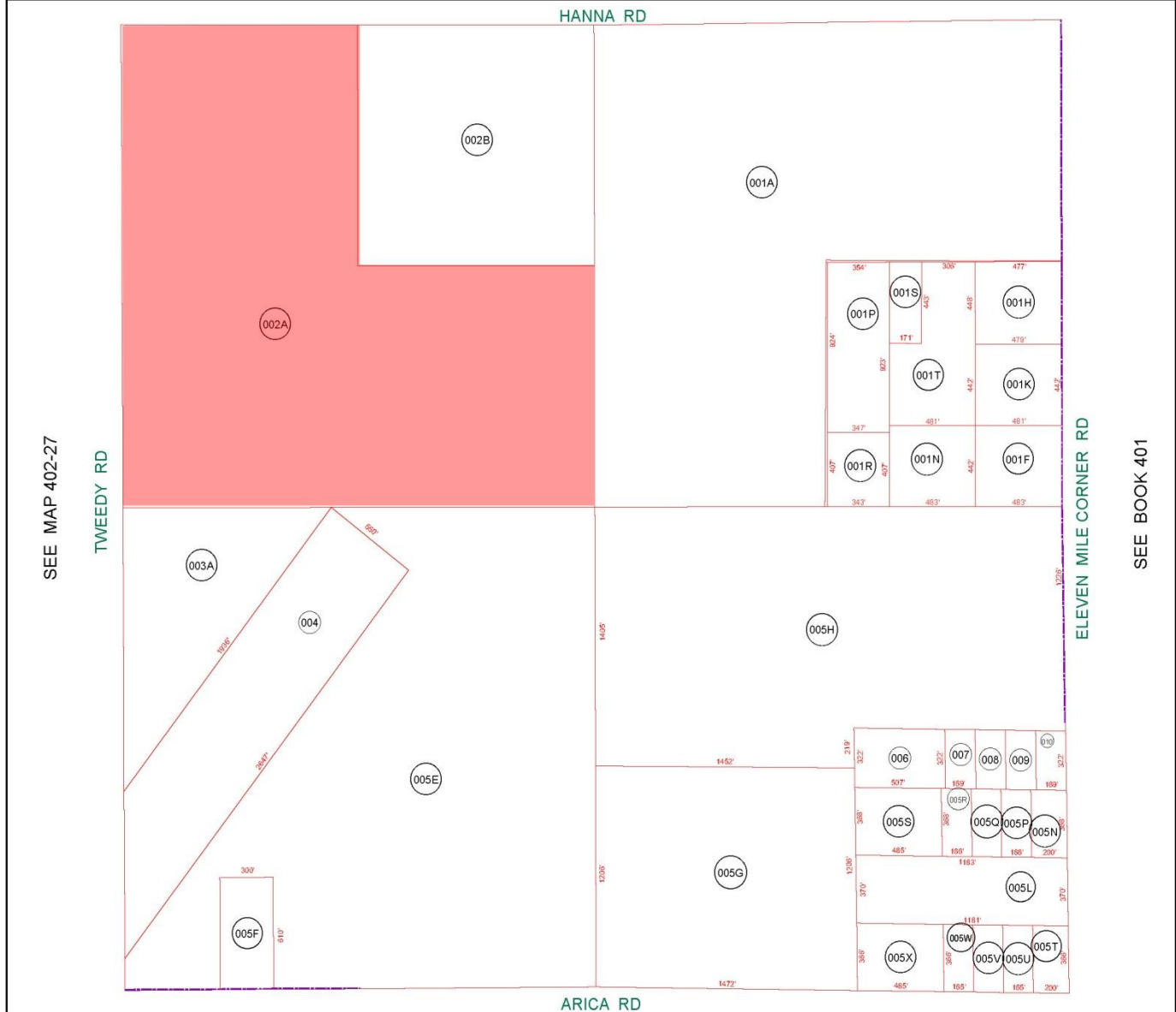
BLM

0 1 2 Miles





SEE MAP 402-25



BOOK - MAP
402-26
SEC. 13 T.07S. R.07E.

LOCATION MAPS
RE.

6	5	4	3	2	1
7	8	9	10	11	12
18	17	16	15	14	13
19	20	21	22	23	24
30	29	28	27	26	25
31	32	33	34	35	36

TOWNSHIP

SECTION

Revised: 08/06/2010
By: TH

PINAL COUNTY
wide open opportunity
Pinal County Assessor

THIS MAP DOES NOT REPRESENT A SURVEY. NO LIABILITY IS ASSUMED FOR THE ACCURACY OF THE DATA DELINEATED HEREIN, EITHER EXPRESSED OR IMPLIED BY PINAL COUNTY OR ITS EMPLOYEES. THIS MAP IS COMPILED FROM OFFICIAL RECORDS, INCLUDING PLATS, SURVEYS, RECORDED DEEDS AND CONTRACTS, AND ONLY CONTAINS INFORMATION REQUIRED FOR THE PINAL COUNTY ASSESSOR'S OFFICE PURPOSES.

SEE MAP 402-27

TWEEDY RD

ARICA RD

SEE BOOK 401

ELEVEN MILE CORNER RD

SEE BOOK 401