



- ❑ **Location:** SWC of Schultz Street & McMurray Boulevard
- ❑ **APN:** 504-24-001J, 001H
- ❑ **Zoning:** I-1 (Light Industrial)
- ❑ **Water:** Arizona Water Company
- ❑ **Sewer:** City of Casa Grande
- ❑ **Size:** +/- 14.73 Acres
- ❑ **Price:** \$4.50/SF or \$2,887,375
- ❑ **Comments:** Property is well located in the Industrial corridor of Casa Grande. Utilities are to the property. Seller will give time to get entitlements in place. Submit all offers.
- ❑ Located in the **Opportunity Zone**

**EXCLUSIVELY LISTED**



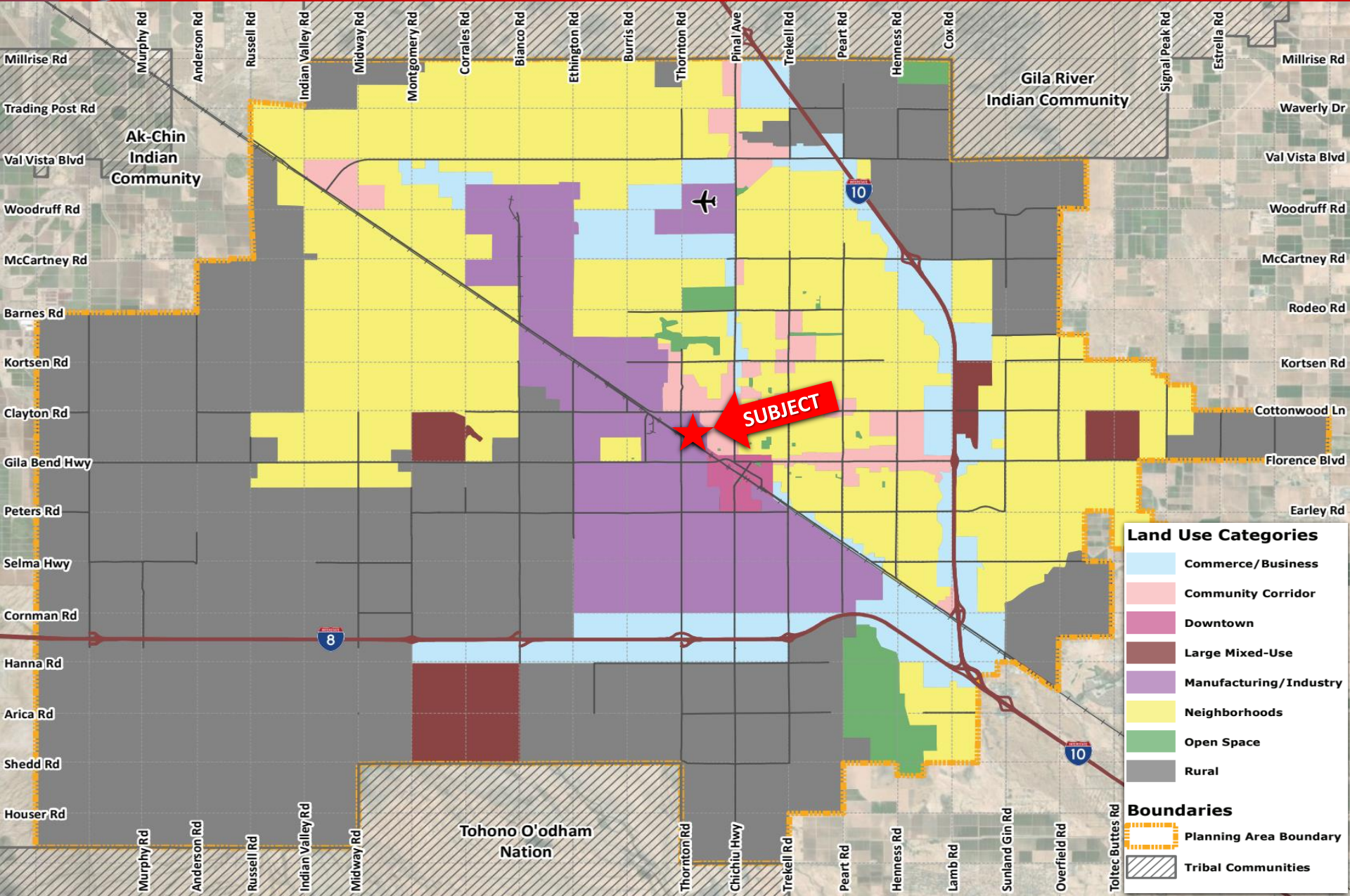






**SUBJECT**





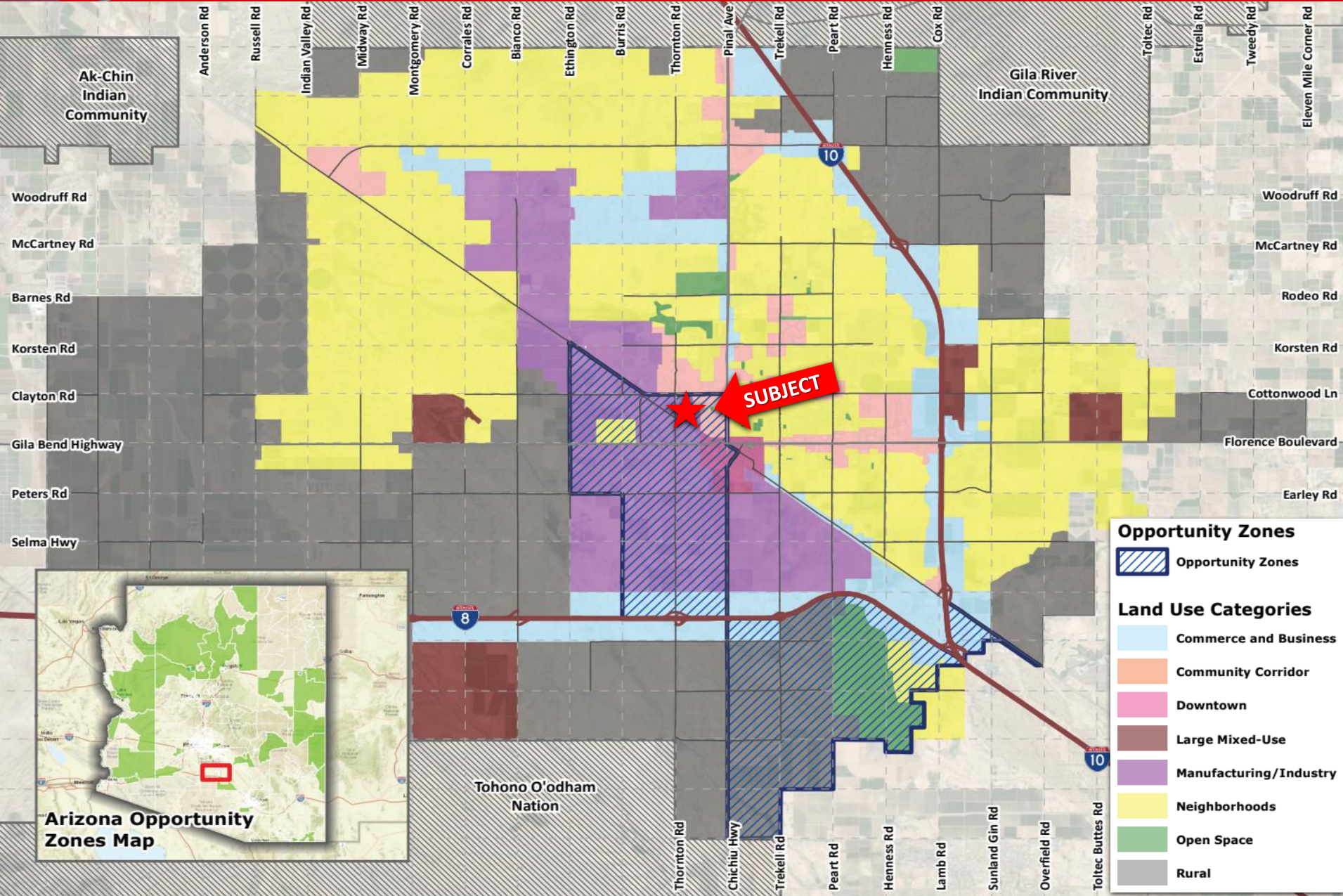
**Land Use Categories**

- Commerce/Business
- Community Corridor
- Downtown
- Large Mixed-Use
- Manufacturing/Industry
- Neighborhoods
- Open Space
- Rural

**Boundaries**

- Planning Area Boundary
- Tribal Communities





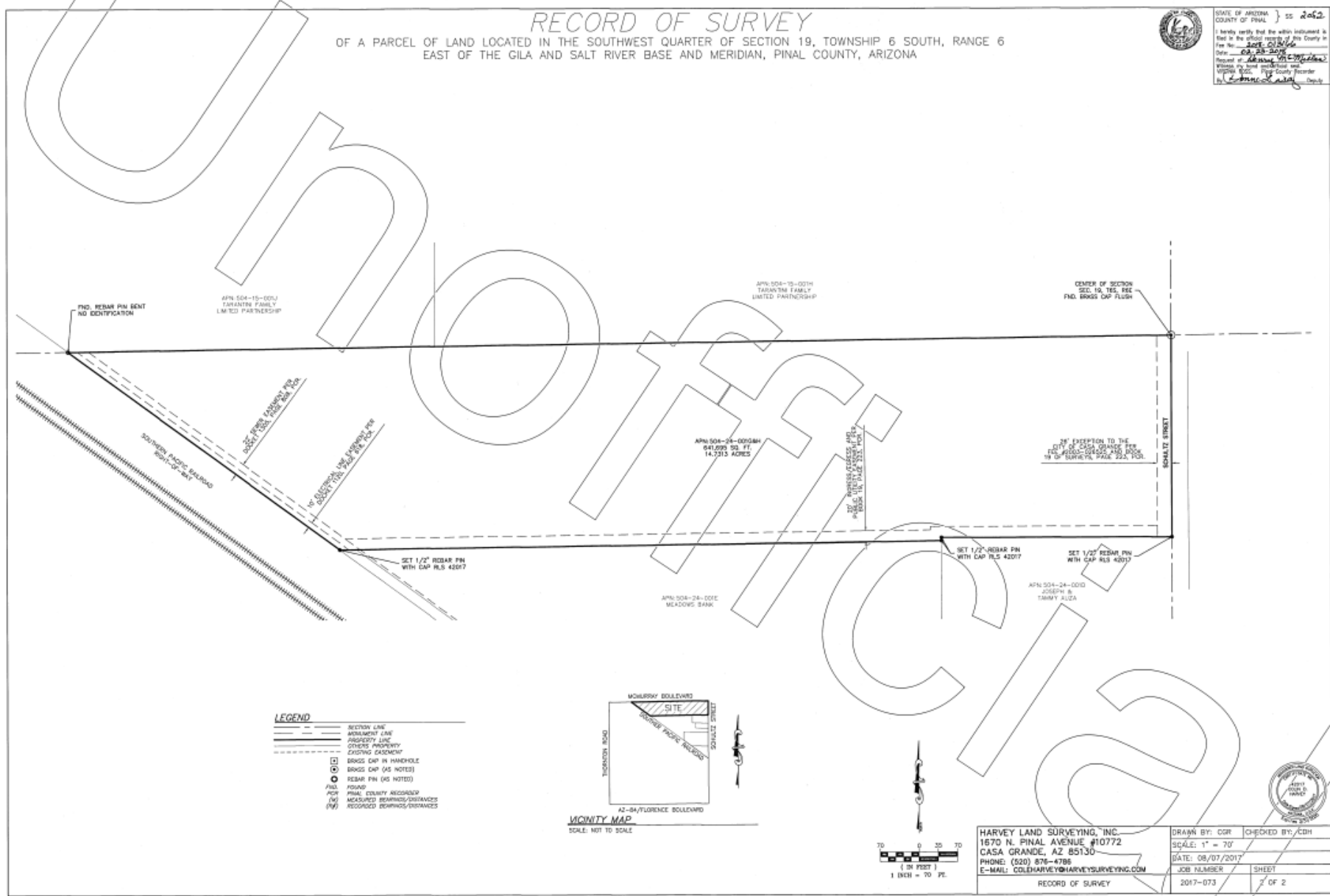
**Opportunity Zones**

- Opportunity Zones

**Land Use Categories**

- Commerce and Business
- Community Corridor
- Downtown
- Large Mixed-Use
- Manufacturing/Industry
- Neighborhoods
- Open Space
- Rural



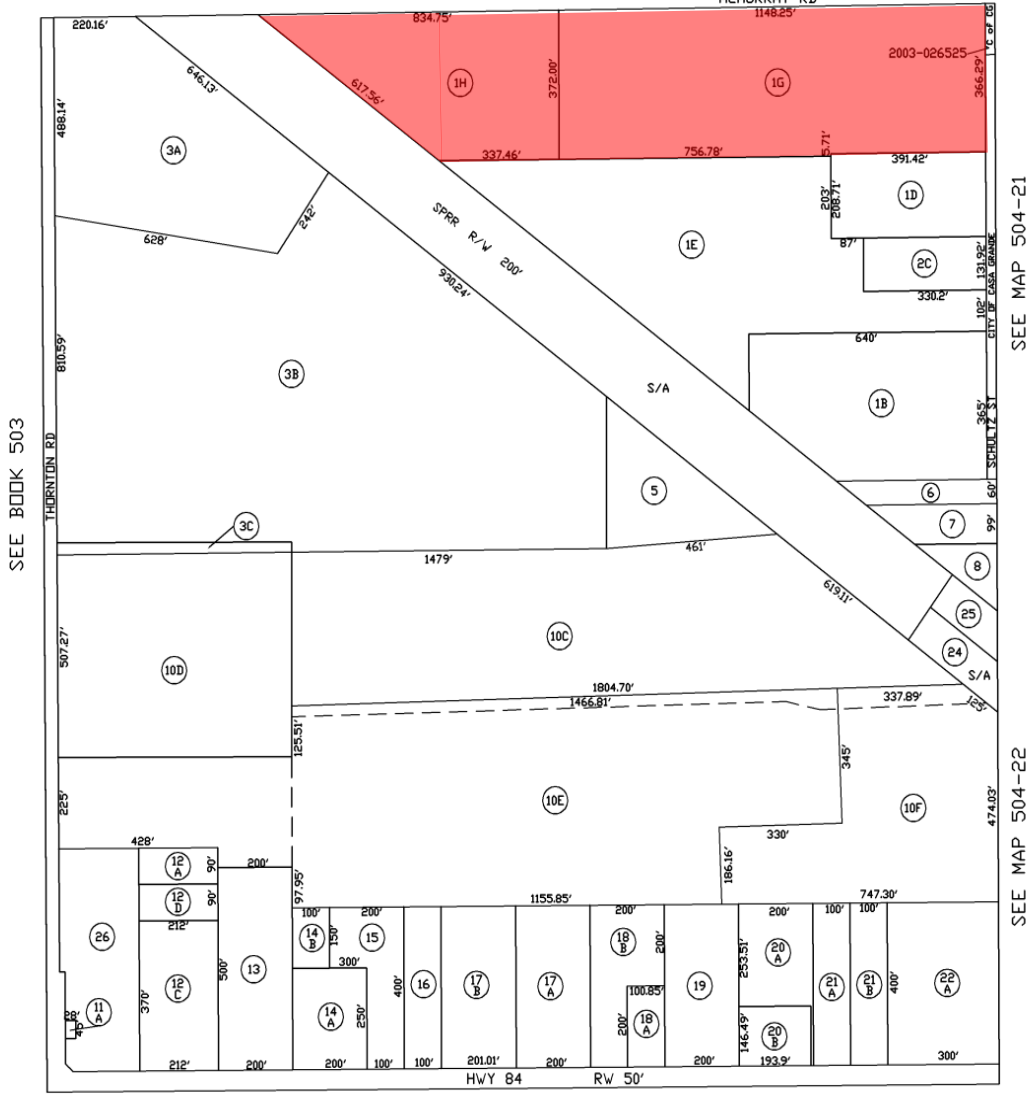


SEC. 19 SW TN.6S RG.6E

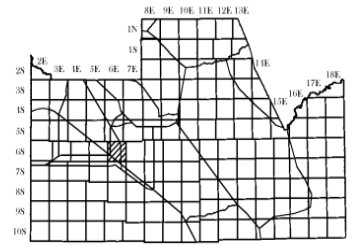
504-24

THIS MAP IS FOR TAX PURPOSES ONLY.  
THIS OFFICE WILL NOT ASSUME LIABILITY FOR REPRESENTATION, MEASUREMENTS OR ACREAGE.  
THE ORIGINAL PLAT OF THIS SUBDIVISION IS ON FILE WITH THE PINAL COUNTY RECORDERS OFFICE, FOR COMPLETE INFORMATION OF PLAT

SEE MAP 504-15



LOCATION MAP



SCALE: 1" = 300'



UPDATED BY: Y  
1-28-2008

VICINITY MAP

