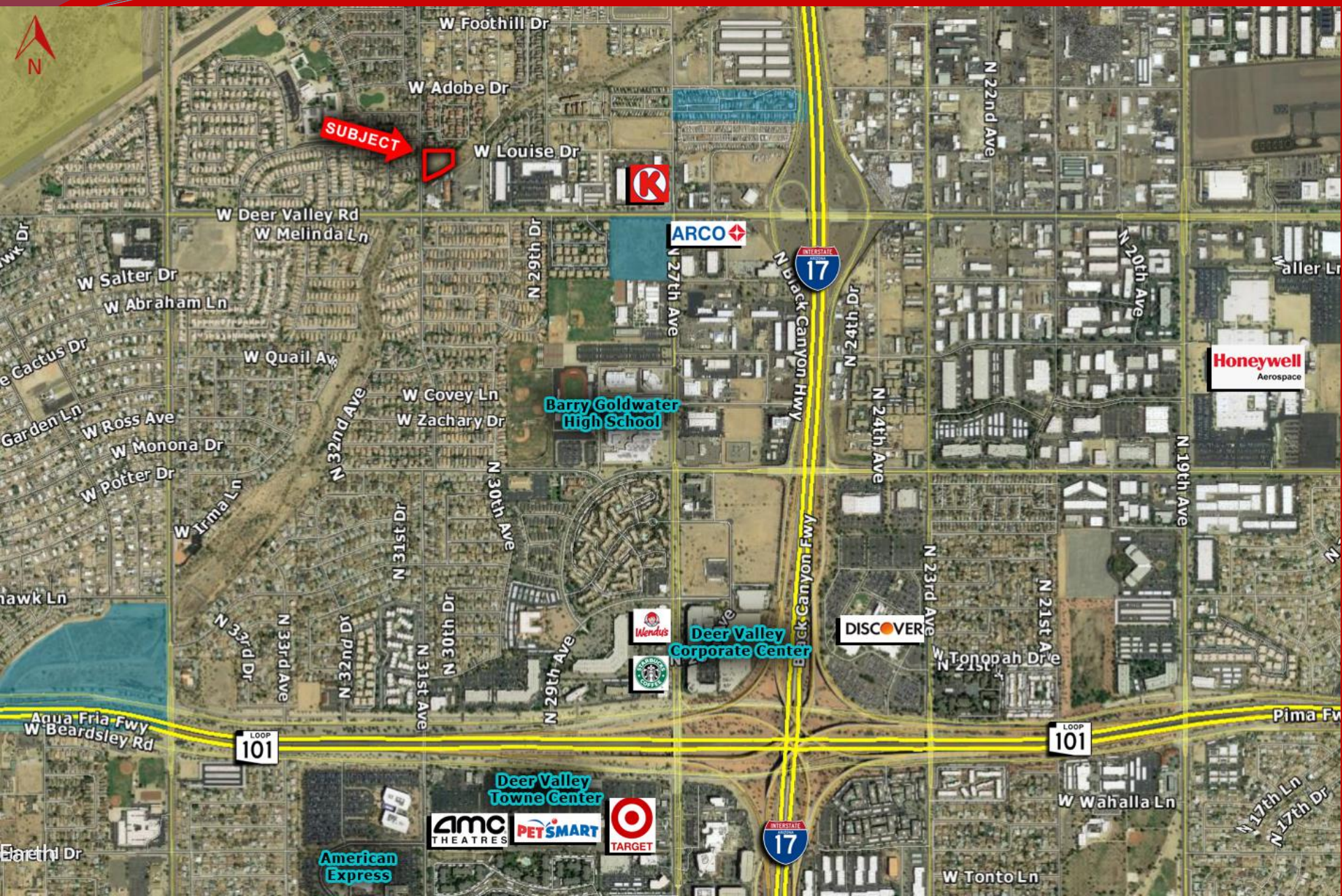




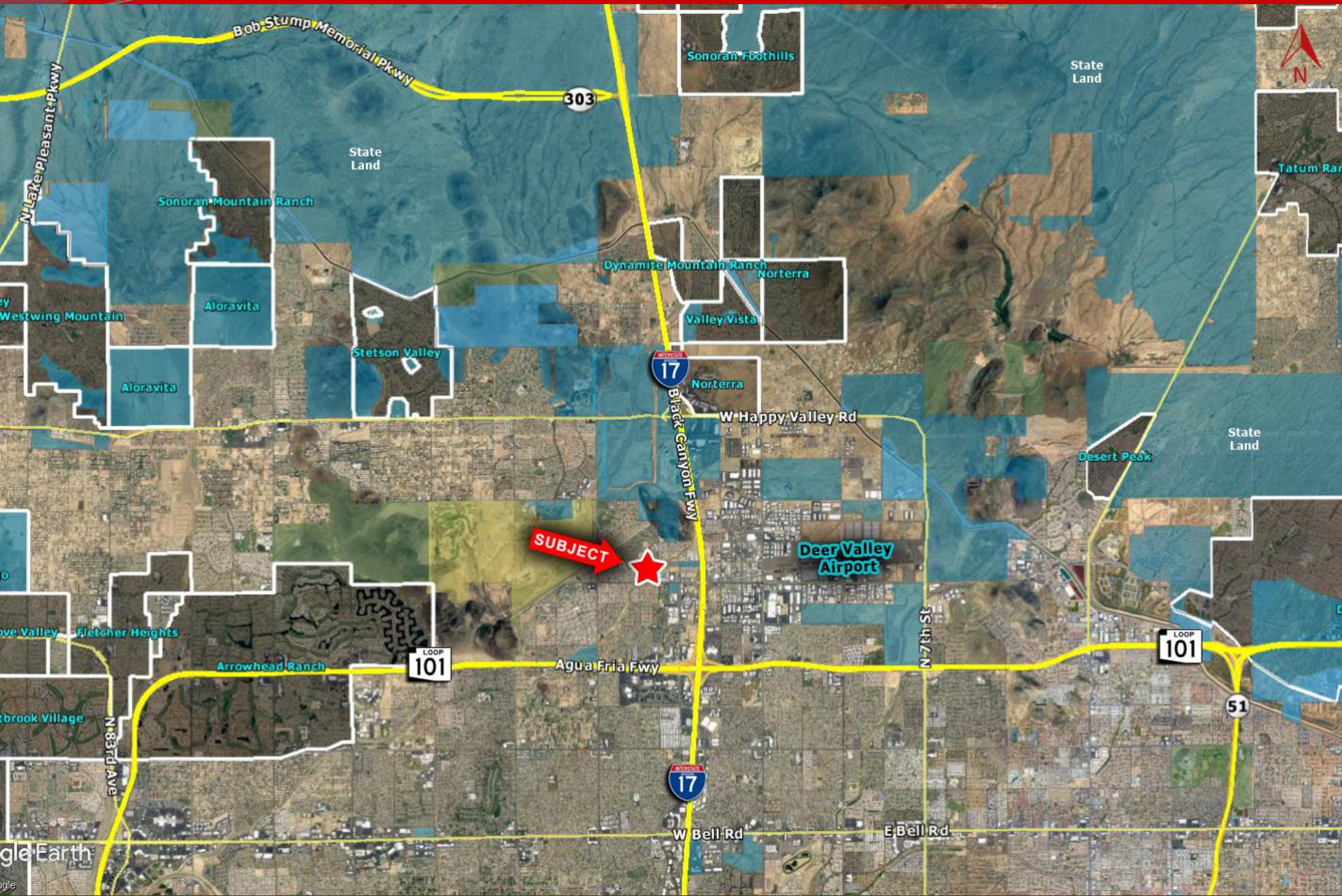
- ❑ **Location:** North of NEC 31<sup>st</sup> Ave and Deer Valley Rd in Phoenix, AZ.
- ❑ **APN:** 206-04-002D
- ❑ **Zoning:** Industrial Park
- ❑ **Size:** +/- 1.7 Acres
- ❑ **Price:** \$324,900 or \$4.38/sf
- ❑ **Taxes:** \$5,614.96 (2020)
- ❑ **Comments:** All offsite improvements are complete. One of only a few parcels remaining in the area for development. Portion of the property is located in the Floodplain along the southern boundary. Seller will entertain all offers.

**EXCLUSIVELY LISTED**









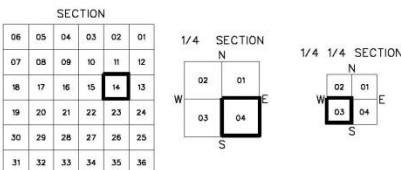


## MARICOPA COUNTY OFFICIAL PARCEL MAP STATE OF ARIZONA

PT. SECTION 14 T04N R02E

MAP ID \* 782 - 14 - 04 - 03

PARCEL IDENTIFICATION NUMBER



### ASSESSOR BOOKS & MAPS WITHIN THIS AREA

BOOK: 206 MAP: 03  
BOOK: 206 MAP: 04  
BOOK: 206 MAP: 06  
BOOK: 206 MAP: 41

### SUBDIVISIONS

HEDGEPAATH PROFESSIONAL PLAZA  
MCR 324-05, 1989 SUB  
WHITE SUBDIVISION  
MCR 335-15, 1990 SUB  
ADOBE MOUNTAIN ESTATES UNIT 2  
MCR 362-36, 1994 SUB  
CASA DEL ROCKRIDGE  
MCR 513-39, 2001 SUB  
ADOBE GARDENS  
MCR 525-47, 2001 SUB  
CASA DEL ROCKRIDGE AMD  
MCR 545-32, 2002 SUB  
CASA DEL ROCKRIDGE LOTS 42, 43 & TRACT K AMD  
MCR 572-20, 2003 SUB  
CASAS MONTANA CONDOMINIUMS  
MCR 700-07, 2006 SUB

SCALE: 1" = 100'



Maricopa County  
Assessor G.I.S.

MARICOPA COUNTY ASSESSOR'S OFFICE  
301 W. JEFFERSON ST.  
PHOENIX, AZ 85003

09-08-2008

