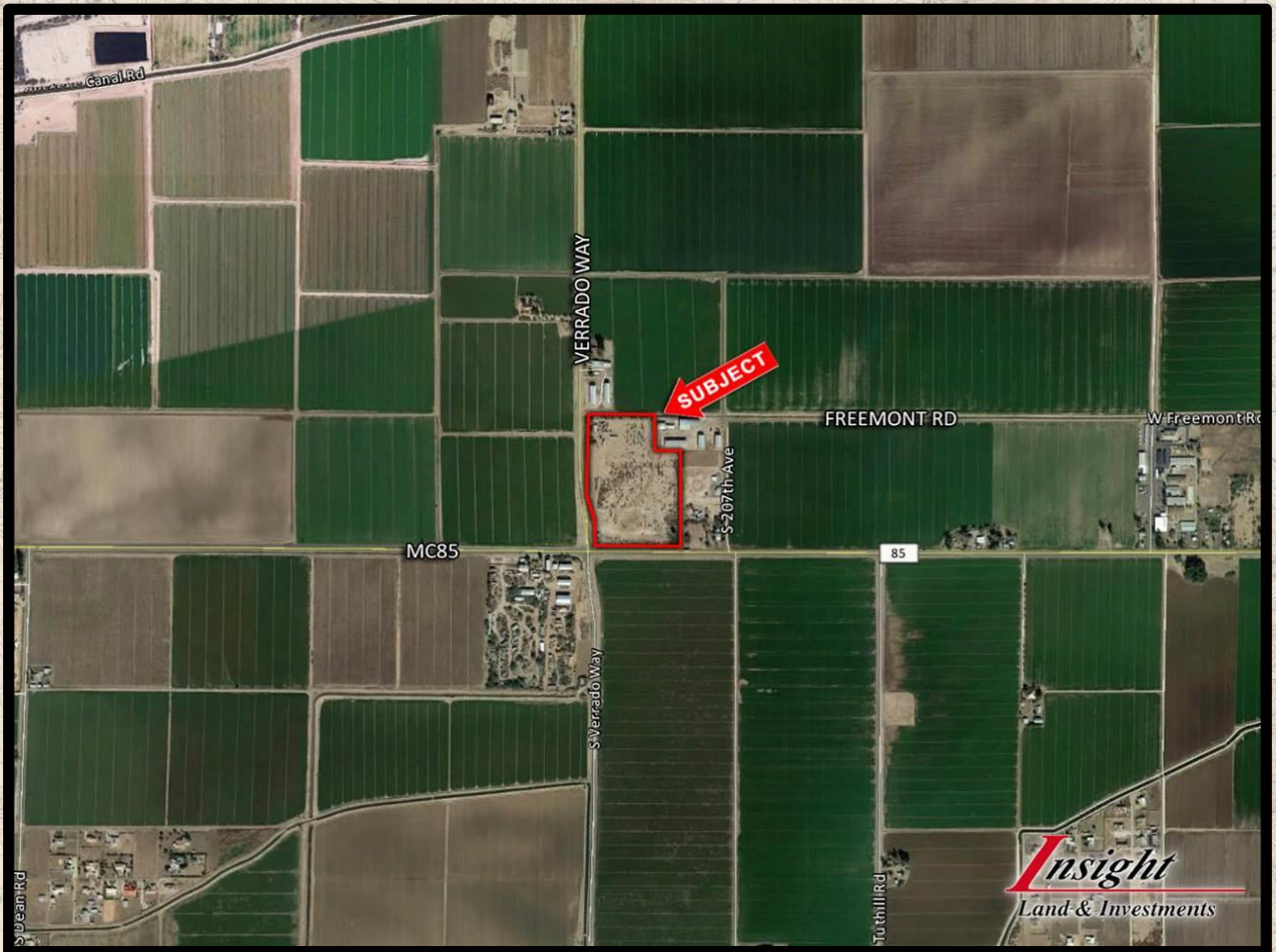


February 17, 2017

Buckeye, Arizona – JLE-04 Parker LLC paid \$630,000.00 to acquire +/- 21 acres of vacant land located at the NEC of Verrado Way and MC-85 in Buckeye, Arizona. The property will be used as a headquarters for an existing farming operation. The Seller was Airport 85 21 LLC. **Tony Bagneschi** of Insight Land & Investments represented the Seller and was also a member/manager of the Selling Entity.



TO LEARN MORE, CONTACT BROKER:

Insight Land & Investments
7400 E McDonald Dr, Ste 121
Scottsdale, Arizona 85250
602.385.1515
www.insightland.com

TONY BAGNESCHI

Office: (602) 385-1511

tbagneschi@insightland.com

[Current Listings & Recent Closings](#)

All information furnished regarding property for sale, rental or financing is from sources deemed reliable, but no warranty or representation is made to the accuracy thereof and same is subject to errors, omissions, change of price, rental or other conditions prior to sale, lease or financing or withdrawal without notice. No liability of any kind is to be imposed on the broker herein.