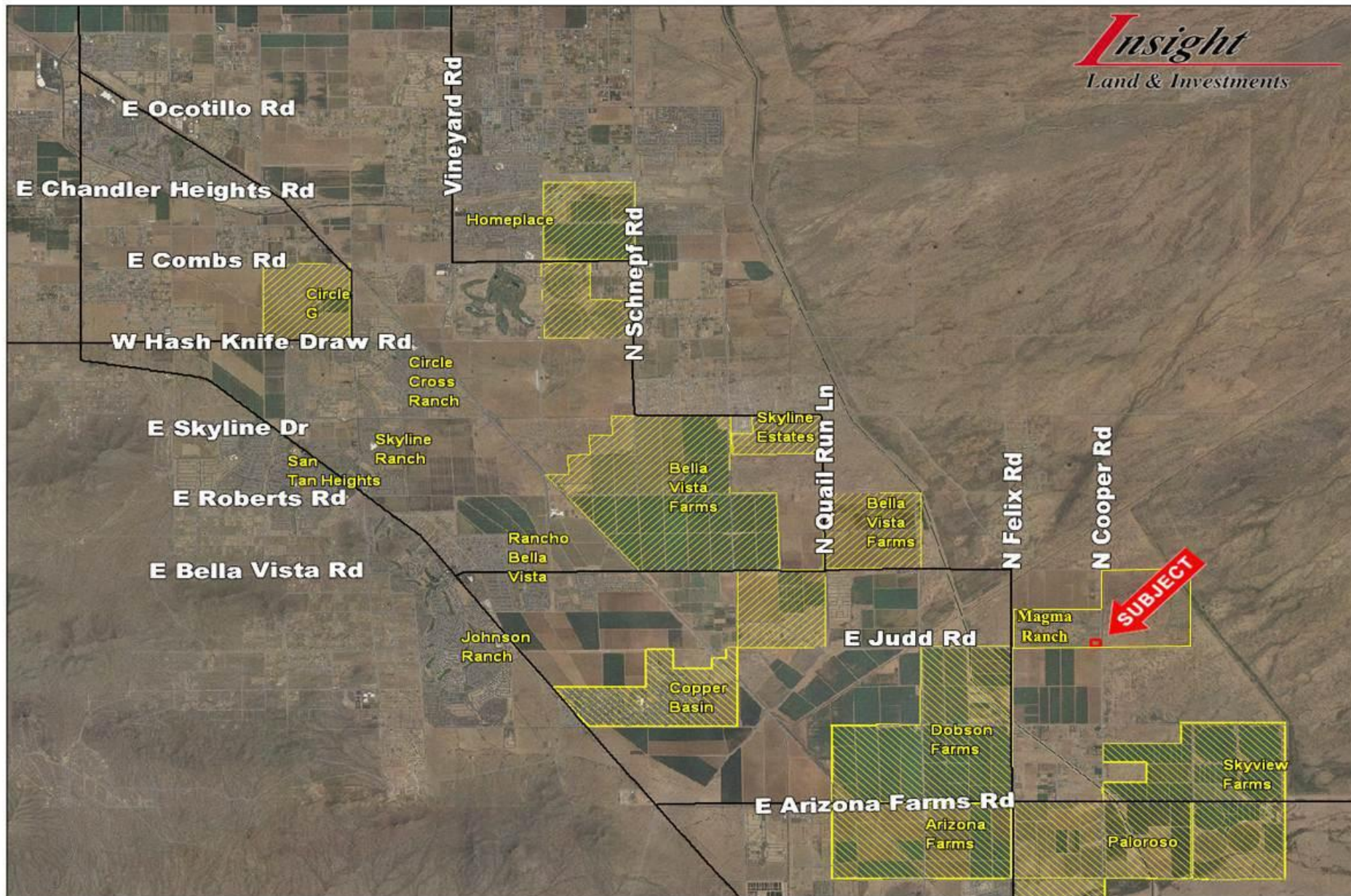




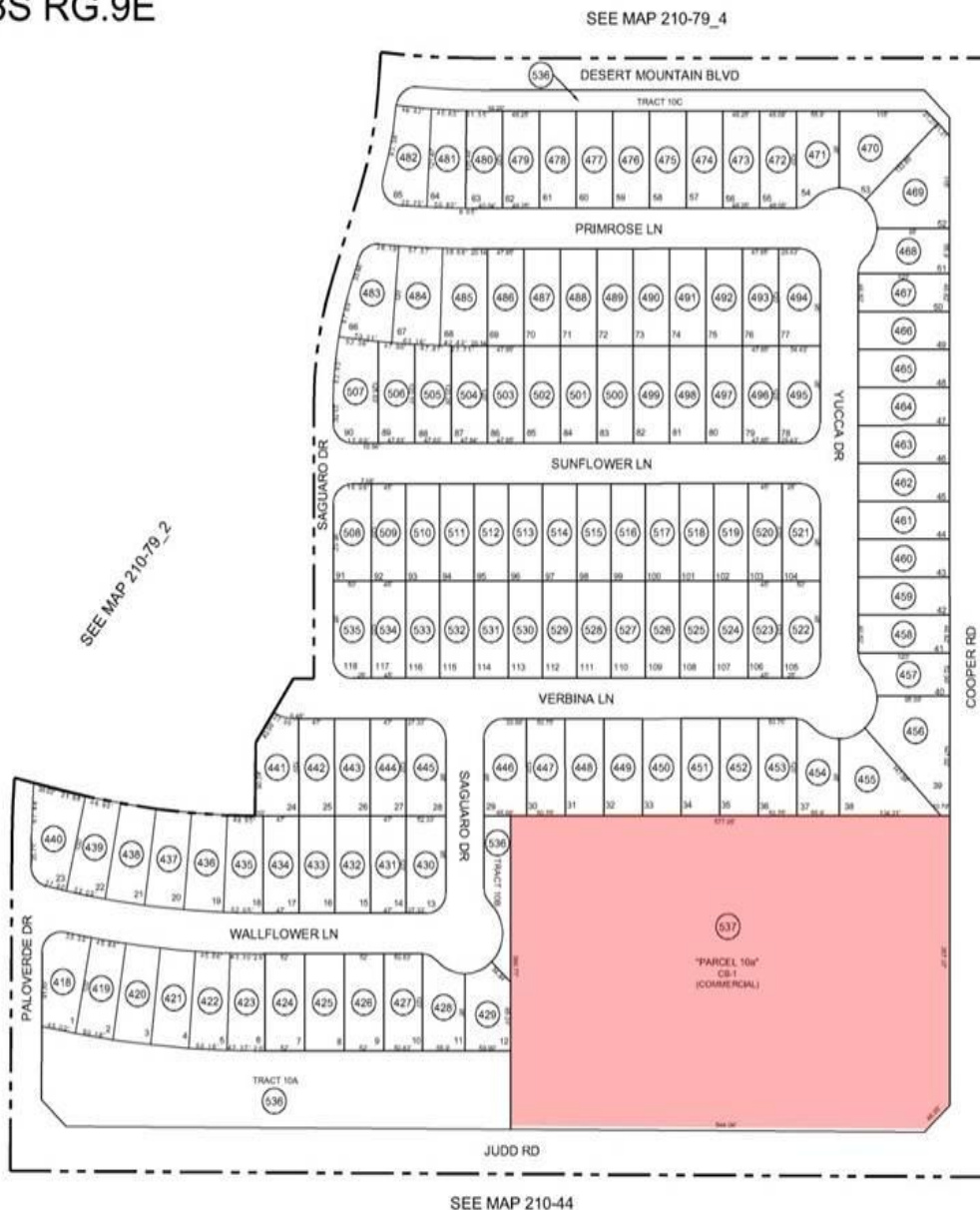
- ❑ **Location:** NWC of Judd Rd & Cooper Rd, Pinaleño, AZ
- ❑ **Size:** 5.13 +/- acres. (223,463 sq. ft.)
- ❑ **Price:** \$220,000 (\$.98sq. ft.)
- ❑ **APN:** 210-79-537
- ❑ **Zoning:** Hard zoned CB-1, Commercial Business
- ❑ **Utilities:**
 - All utilities to site.
 - Water & Sewer – Johnson Utilities
 - Electricity - APS
- ❑ **Comments**
 - Off site improvements complete.
 - Property is within Magma Ranch master-planned subdivision.

MAGMA RANCH – COMMERCIAL CORNER | PINALEÑO, AZ



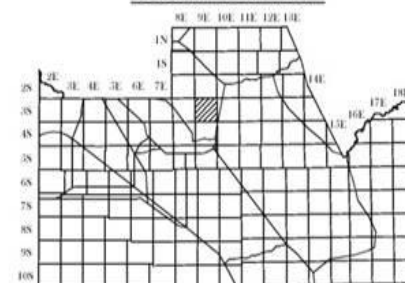
SEC. 20 TN.3S RG.9E

210-79_5



MAGMA RANCH I
UNIT 10
CAB F - SLD 105

LOCATION MAP



VICINITY MAP



RETIRED PARCELS:
210-39-009J & 210-39-009K
ALL TRACTS (TRACTS 10A, 10B, & 10C) UNDER:
210-79-536
COMMERCIAL LOT (PARCEL 10A) UNDER:
210-79-537



07-07-2009
UPDATED BY: DN

THIS MAP IS FOR VALUATION PURPOSES ONLY.
THIS OFFICE WILL NOT ASSUME LIABILITY FOR
REPRESENTATION, MEASUREMENTS OR ACREAGE
SURVEYS & SUBDIVISION PLATS ARE ON FILE
WITH THE PINAL COUNTY RECORDERS OFFICE.
PINAL COUNTY ASSESSORS MAP

