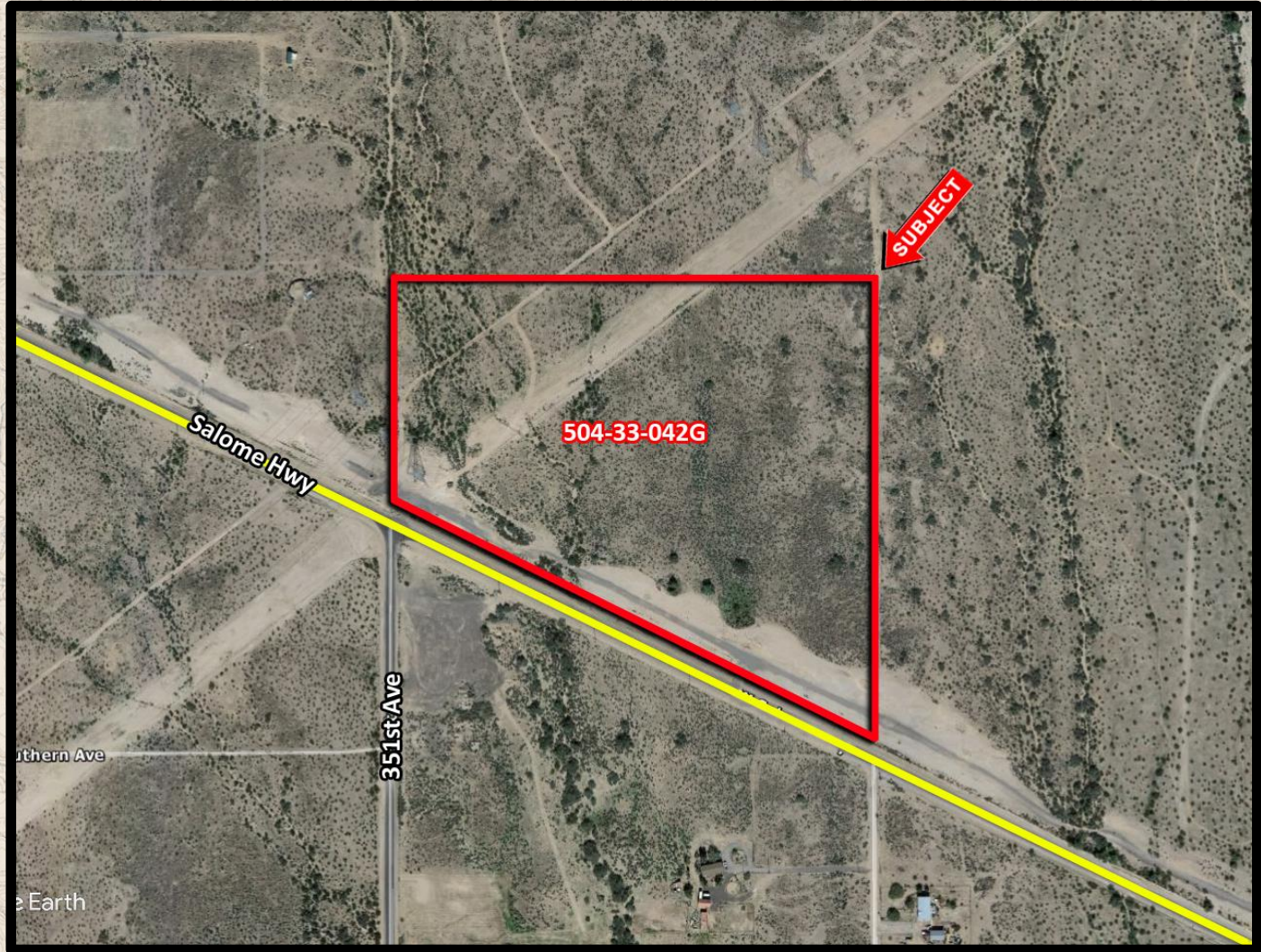


**April 30, 2019**

**Tonopah, Arizona** – Todd Wyllie paid \$95,000.00 to acquire +/- 27.33 acres of vacant residential land located at the NEC of 351<sup>st</sup> Ave & Salome Hwy in Tonopah, Arizona. The Seller was Cowley Family Foundation, LLC. **Joe Werner & Sharon Contorno** of Insight Land & Investments represented both Buyer & Seller in this transaction.



**TO LEARN MORE, CONTACT BROKERS:**

**Insight Land & Investments**  
7400 E McDonald Dr, Ste 121  
Scottsdale, Arizona 85250  
602.385.1515  
[www.insightland.com](http://www.insightland.com)

**JOE WERNER**  
Office: (602) 385-0567  
[jwerner@insightland.com](mailto:jwerner@insightland.com)

**SHARON CONTORNO**  
Office: (602) 620-6626  
[sharoncontorno@gmx.com](mailto:sharoncontorno@gmx.com)